



Models 75, 76 & 77

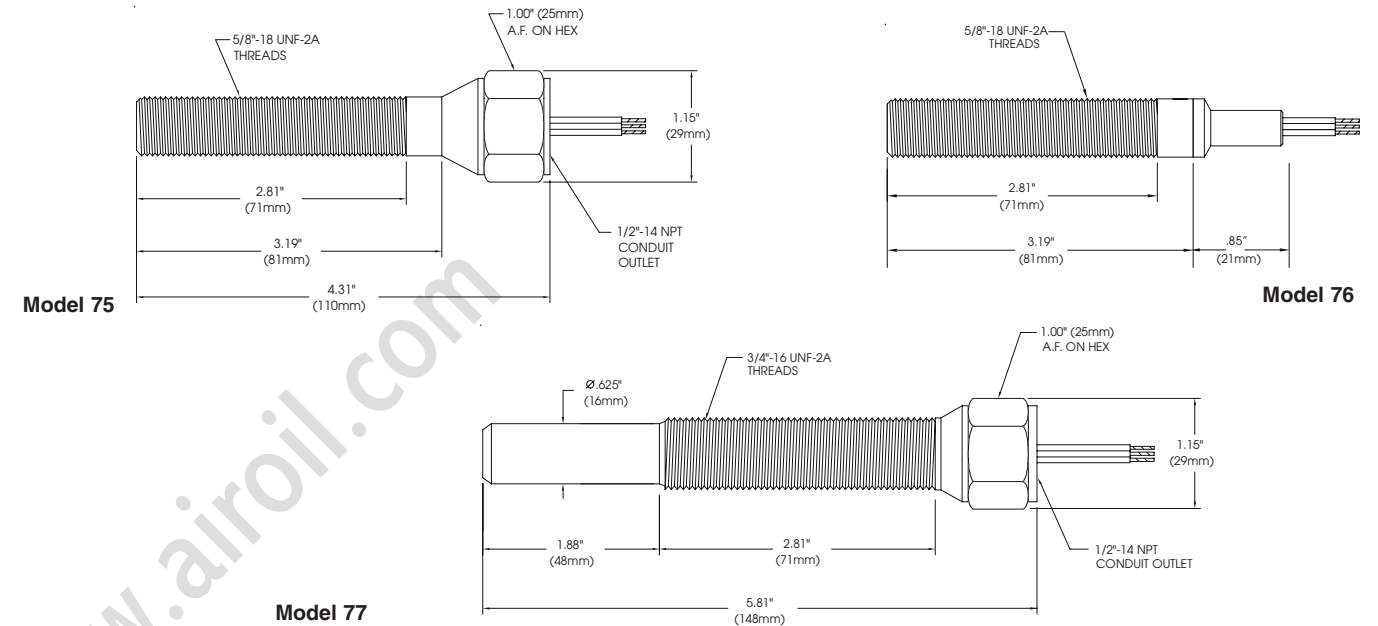
GO Switch Models 75 and 76 are the same as models 73 and 74, only slightly longer with more thread surface and therefore more adjustability. Model 77 is the longest and largest option in the 70 series family.

Features:

- SPDT 4A contacts
- Intrinsically Safe
- 40° to 221°F operating temperature

Options:

- Suitable for Zone 0, 1, or 2 explosion proof
- 40° to 400°F high temperature
- Quick disconnect connector
- Underwater capabilities
- English or Metric threads



Model	Contact Form	Sensing Range	Outlet Position	Enclosure Material	Approvals	Wiring Options																																																				
<p>Repeatability: .002" (.05mm) typical</p> <p>Response Time: 8 milliseconds</p> <p>Differential: Approx. .020" (.51 mm)</p> <p>Operating Temperature: -40° to 221°F (-40° to 105°C). HiTemp to 400°F (204°C)</p> <p>75 Model 75 5/8" (16 mm) dia. x 4 5/16" (110 mm) long with 5/8"-18 UNF x 2 13/16" (71 mm) threads and 1/2" NPT conduit hub</p> <p>75M Model 75 M18 x 1 external metric thread</p> <p>76 Model 76 5/8" (16 mm) dia. x 3 3/16" (81 mm) long with 5/8"-18 UNF x 2 13/16" (71 mm) threads. No conduit hub</p> <p>76M Model 76 M18 x 1 external metric thread</p> <p>77 Model 77 3/4" (19 mm) dia. x 5 13/16" (148 mm) long with 3/4"-16 UNF x 2 13/16" (71mm) threads.</p> <p>Ordering Guide Fill in the boxes to create your 'ordering number.'</p>	<p>Contact Material: Palladium silver with sawtooth surface configuration</p> <p>Form: SPDT, Form C</p> <p>Ratings: Resistive</p> <table border="1"> <thead> <tr> <th colspan="2">AC</th> <th colspan="2">DC</th> </tr> <tr> <th>Volts</th> <th>Amps</th> <th>Volts</th> <th>Amps</th> </tr> </thead> <tbody> <tr> <td>120</td> <td>4</td> <td>24</td> <td>3</td> </tr> <tr> <td>240</td> <td>2</td> <td>48</td> <td>1.25</td> </tr> <tr> <td></td> <td></td> <td>125</td> <td>0.5</td> </tr> <tr> <td></td> <td></td> <td>250</td> <td>0.5</td> </tr> </tbody> </table> <p>1 Single Pole Double Throw (Form C)</p> <p>Form C - SPDT</p>	AC		DC		Volts	Amps	Volts	Amps	120	4	24	3	240	2	48	1.25			125	0.5			250	0.5	<p>Target Material: Ferrous steel</p> <p>Sensing Range: .100" (3 mm) end sensing (2,000 PSI) .072" (2 mm) end sensing (5,000 PSI) .060" (1.5 mm) end sensing (10,000 PSI)</p> <p>Sensing Range with Target Magnet: up to .35" (9 mm)</p> <p>3 Standard sensing - approx. .100" (3 mm) end sensing (must be 2 or 6)</p> <p>4 HiPressure sensing - approx. .072" (2 mm) end sensing (Enclosure must be 3 or 7 and Approvals must be 2, 3, 7, or 8)</p> <p>5 HiPressure sensing - approx. .060" (1.5 mm) end sensing (Enclosure must be 4 and Approvals must be 2, 7, or 8)</p> <p>Extended Sensing Range with External Target Magnets (See Accessories for External Target Magnets)</p> <table border="1"> <thead> <tr> <th>Magnet</th> <th>Sensing</th> <th>Differential</th> </tr> </thead> <tbody> <tr> <td>AMP3</td> <td>.20"</td> <td>.25"</td> </tr> <tr> <td>AMS4</td> <td>.35"</td> <td>.15"</td> </tr> <tr> <td>AMS7</td> <td>.20"</td> <td>.05"</td> </tr> </tbody> </table>	Magnet	Sensing	Differential	AMP3	.20"	.25"	AMS4	.35"	.15"	AMS7	.20"	.05"	<p>Conduit Outlet: 1/2" NPT</p> <p>2 Side entry with Teflon insulated leads (Model 76) (Approval must be 2 or 8) (Wiring must be F)</p> <p>5 Bottom of enclosure</p>	<p>2 303 stainless steel (rated 2,000 PSI) (Sensing must be 3)</p> <p>3 HiPressure - 303 stainless steel (rated 5,000 PSI) (Sensing must be 4) (Approval must be 2, 7, 8, or 9)</p> <p>4 HiPressure - 303 stainless steel (rated 10,000 PSI) (Sensing must be 5) (Approval must be 2, 7, 8, or 9)</p> <p>6 316 stainless steel (rated 2,000 PSI)</p> <p>7 303 stainless steel (rated 3,500 PSI) (Approval must be 3)</p>	<p>UL SF BASEEFA</p> <p>2 High temperature to 400°F (204°C) with Teflon™ insulated leads (Wiring must be F)</p> <p>3 UL listed explosion proof for CI I, Div 1 & 2; Grps A,B,C,D; CI II, Div 1 & 2, Grps E-G; CI III (Model 75 & 77) (Wiring must be A, B, or F) (Lead seal req'd within 18")</p> <p>4 CSA certified explosion proof for CI I, Div 1; Grps A,B,C,D; CI II, Div 1; Grps E-G; CI III (Model 75) (Wiring must be A, B, or F) (Lead seal req'd within 18")</p> <p>6 CSA certified CI I, Div 2; Grps A,B,C,D; CI II, Div 2; Grps E-G; CI III (Model 75 & 77) (Wiring must be A, B, or F) (Lead seal req'd within 18")</p> <p>7 CSA certified General Purpose</p> <p>8 UL listed General Purpose</p> <p>9 CENELEC: EExd IIC T6 Zone 1. (Model 75 & 77) (Wiring must be A or B)</p> <p>T ATEX Zone 1 EEx d IIC T6 (-20 to +50°C), II 2G (Model 75 only) (For Hi Temp to +150 use Wiring H)</p>	<p>Lead Wires 18 Gauge (.110" dia) potted-in PVC insulated AWM / TEW stranded lead wires, rated at 221°F (105°C) 600V UL / CSA listed</p> <p>A2 36" (914 mm)</p> <p>A3 72" (1829 mm)</p> <p>A4 144" (3658 mm)</p> <p>A_ _ _ Lengths greater than 144" (Specify length in 5' increments (e.g. A150 = 150 ft. of leads))</p> <p>Cable 18 Gauge (.250" dia.) potted-in PVC cable, rated at 176°F (80°C) 300V, UL / CSA listed</p> <p>B2 36" (914 mm)</p> <p>B3 72" (1829 mm)</p> <p>B4 144" (3658 mm)</p> <p>B_ _ _ Lengths greater than 144" (Specify length in 5' increments (e.g. B150 = 150 ft. of cable))</p> <p>Water Resistant 18 Gauge (.250" dia.) PVC cable rated at 176°F (80°C) 300V with water-resistant squeeze connector. (Model 76) UL / CSA listed</p> <p>C2 36" (914 mm)</p> <p>C3 72" (1829 mm)</p> <p>C4 144" (3658 mm)</p> <p>C_ _ _ Lengths greater than 144" (Specify length in 5' increments (e.g. C150 = 150 ft. of cable))</p> <p>Quick Disconnect Male Quick Disconnect only, potted-in connector. (CSA requires a case ground) (Approvals must be 7 or 8)</p> <table border="1"> <thead> <tr> <th colspan="2">Mini-change®</th> <th colspan="2">Micro-change®</th> </tr> </thead> <tbody> <tr> <td>DCA</td> <td>3 - pin Mini-change® type</td> <td>DBA</td> <td>3 - pin Micro-change® type</td> </tr> <tr> <td>DCD</td> <td>4 - pin Mini-change® type</td> <td>DBD</td> <td>4 - pin Micro-change® type</td> </tr> <tr> <td>DCG</td> <td>5 - pin Mini-change® type</td> <td>DBG</td> <td>5 - pin Micro-change® type</td> </tr> </tbody> </table> <p>SubSea Underwater Connector (Models 75 & 77) (Certified not to leak underwater)</p> <p>3DD 3 pin</p> <p>3DE 3 pin right-angle</p> <p>4DD 4 pin</p> <p>4DE 4 pin right-angle</p> <p>HiTemp Leads 18 gauge (.070" dia. potted-in Teflon™ insulated leads rated at 482°F (250°C) 600V UL / CSA listed</p> <p>F2 36" (914 mm)</p> <p>F3 72" (1829 mm)</p> <p>F4 144" (3658 mm)</p> <p>F_ _ _ Lengths greater than 144" (Specify length in 5' increments feet (e.g. F150 = 150 ft. of leads))</p> <p>HiTemp Leads 18 gauge (.070" dia. potted-in Peek™ insulated leads rated at 400°F (200°C) 600V UL / CSA listed (Approval must be T)</p> <p>H2 36" (914 mm)</p> <p>H3 72" (1829 mm)</p> <p>H4 144" (3658 mm)</p> <p>H_ _ _ Lengths greater than 144" (Specify length in 5' increments (e.g. H150 = 150 ft. of leads))</p>	Mini-change®		Micro-change®		DCA	3 - pin Mini-change® type	DBA	3 - pin Micro-change® type	DCD	4 - pin Mini-change® type	DBD	4 - pin Micro-change® type	DCG	5 - pin Mini-change® type	DBG	5 - pin Micro-change® type
AC		DC																																																								
Volts	Amps	Volts	Amps																																																							
120	4	24	3																																																							
240	2	48	1.25																																																							
		125	0.5																																																							
		250	0.5																																																							
Magnet	Sensing	Differential																																																								
AMP3	.20"	.25"																																																								
AMS4	.35"	.15"																																																								
AMS7	.20"	.05"																																																								
Mini-change®		Micro-change®																																																								
DCA	3 - pin Mini-change® type	DBA	3 - pin Micro-change® type																																																							
DCD	4 - pin Mini-change® type	DBD	4 - pin Micro-change® type																																																							
DCG	5 - pin Mini-change® type	DBG	5 - pin Micro-change® type																																																							
Model	Contact Form 1	Sensing Range	Outlet Position	Enclosure Material	Approvals	Wiring Options																																																				

Agency Approvals

Termination Options	(2) Hi-Temp	(3) UL Cl. 1, Div. 1	(4) CSA Cl. 1, Div. 1	(6) CSA Cl. 1, Div. 2	(7) CSA General Purpose	(8) UL General Purpose	(9) Cenelec EExdIIC T6 Zone 1
A - Potted PVC Leads		X	X	X	X	X	X
B - Potted PVC Cable		X	X	X	X	X	X
C - Water squeeze (Models 72, 74 & 76)					X	X	
D - Quick Disconnect					X	X	
D - SubSea™ Connector (Models 73, 75 & 77)					X	X	
F - HiTemp™ Teflon Leads	X				X	X	
H - HiTemp™ Peek Leads	X				X	X	

NEMA Ratings

Models 71, 73 ,75, 77	Non-Hazardous			Hazardous		
NEMA CLASSES	4	4X	6	6P	7	9
A - Potted PVC leads	X	X	X	X	X	X
B - Potted PVC cable	X	X	X	X	X	X
C - PVC Cable w/ squeeze	X	X				
D - Quick Disconnect	X	X	X	X		
D - SubSea™ Connector	X	X	X	X		
F - HiTemp™ Leads	X	X	X	X	X	X

X = Approvals Available

Models 72, 74, 76	Non-Hazardous			Hazardous		
NEMA CLASSES	4	4X	6	6P	7	9
A - Potted PVC leads	X	X				
B - Potted PVC cable	X	X				
C - PVC Cable w/ squeeze	X	X				
D - Quick Disconnect	X	X	X	X		
D - SubSea™ Connector	X	X	X	X		
F - HiTemp™ Teflon Leads	X	X				
H - HiTemp™ Peek Leads	X	X				

X = Designed to meet respective NEMA specifications

Wiring Diagrams (male view)

3 Wire PVC & HiTemp Leads	
N/C	Red
N/O	Blue
COM	Black

Terminations A & F

3 Conductor PVC Cable	
N/C	Red
N/O	White
COM	Black

Termination B

4 Wire PVC & HiTemp Leads	
N/C	Red
N/O	Blue
COM	Black
GND	Green

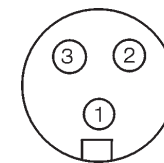
Terminations A & F

4 Conductor PVC Cable	
N/C	Red
N/O	White
COM	Black
GND	Green

Termination B

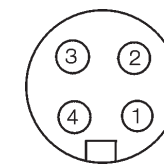
Mini-Change QDC - 3 Pin	
Pin 1	COM
Pin 2	N/C
Pin 3	N/O

Termination DCA



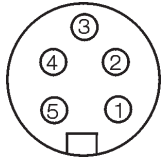
Mini-Change QDC - 4 Pin	
Pin 1	COM
Pin 2	N/O
Pin 3	N/C
Pin 4	GND

Termination DCD



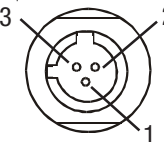
Mini-Change QDC - 5 Pin - SPDT	
Pin 1	N/O
Pin 2	N/C
Pin 3	GND
Pin 4	Inactive
Pin 5	COM

Termination DCG



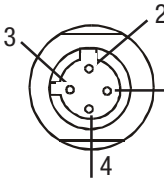
Micro-Change QDC - 3 Pin	
Pin 1	COM
Pin 2	N/C
Pin 3	N/O

Termination DBA



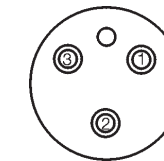
Micro-Change QDC - 4 Pin	
Pin 1	COM
Pin 2	N/O
Pin 3	N/C
Pin 4	GND

Termination DBD



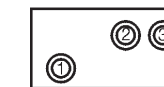
SubSea - 3 Pin - Lock Sleeve	
Pin 1	N/C
Pin 2	COM
Pin 3	N/O

Termination 3DD



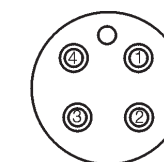
SubSea - 3 Pin - Right Angle	
Pin 1	COM
Pin 2	N/O
Pin 3	N/C

Termination 3DE



SubSea - 4 Pin - Lock Sleeve	
Pin 1	COM
Pin 2	N/O
Pin 3	N/C
Pin 4	GND

Termination 4DD



SubSea - 4 Pin - Right Angle	
Pin 1	COM
Pin 2	N/O
Pin 3	N/C
Pin 4	GND

Termination 4DE

