

NGT Specialty Valves

Table of Contents

| Page | Description | Flow | Available Options |
|------|------------------------------------|------------|---|
| | <u>Pilot-Operated Check</u> | | |
| 1 | 1/4 tube | .5 | |
| 2 | 1/4 tube | .5 | 24 vdc solenoid |
| 3 | 1/8 & 1/4 nptf | 1.2 | |
| 4 | 1/8 & 1/4 nptf | 1.2 | flow control |
| 5 | 1/8 & 1/4 nptf | 1.2 | 24 vdc solenoid |
| 6 | 1/8 & 1/4 nptf | 1.2 | 24 vdc solenoid & flow control |
| 7 | 3/8 nptf | 1.2 | |
| 8 | 3/8 nptf | 1.2 | flow control |
| 9 | 3/8 nptf | 1.2 | 24 vdc solenoid |
| 10 | 3/8 nptf | 1.2 | 24 vdc solenoid & flow control |
| 11 | 1/8, 1/4, 3/8 nptf & 1/4, 3/8 bspp | 1.7 to 2.6 | |
| 12 | 1/8, 1/4, 3/8 nptf & 1/4, 3/8 bspp | 1.7 to 2.6 | flow control |
| 13 | 1/8, 1/4, 3/8 nptf & 1/4, 3/8 bspp | 1.7 to 2.6 | adjustable pilot pressure |
| 14 | 1/4 & 3/8 nptf | 2.6 | all ports on one side |
| 15 | 1/4 & 3/8 nptf | 2.6 | ports on one side & adj. pilot pressure |
| 16 | 1/4 & 3/8 nptf | 2.6 | ports on one side & flow control. |
| 17 | 1/4 & 3/8 nptf | 2.6 | 316 stainless |
| 18 | 1/4 & 3/8 nptf | 2.6 | swivel mount |
| 19 | 1/4 & 3/8 nptf | 2.6 | swivel mount & flow control |
| 20 | 1/4 & 3/8 nptf | 2.6 | swivel mount & adjust. pilot pressure |
| 21 | 1/2, & 3/4 nptf | 3.8 | |
| 22 | 1/2, & 3/4 nptf | 3.8 | flow control |
| 23 | 1/2, & 3/4 nptf | 3.8 | adj. pilot pressure |

| Page | Description | Flow | Available Options |
|------|---|------|---------------------------------|
| | <u>Dual Pilot-Operated Check</u> | | |
| 24 | 10-32 ports | .25 | |
| 25 | Dual Manifold Mount | 1 | For Numatics 2012 base manifold |
| 26 | 1/4 nptf | 1.5 | |
| 27 | 3/8 & 1/2 nptf & 3/8 bspp | 3.9 | |
| 28 | 3/8 & 1/2 nptf & 3/8 bspp | 3.9 | flow controls |
| 29 | 3/8 & 1/2 nptf | 3.9 | remote release |
| 30 | 3/8 & 1/2 nptf | 3.9 | flow controls & remote release |
| | <u>Pneumatic Counterbalance</u> | | |
| 31 | 1/4, 3/8 nptf & 1/4, 3/8 bspp | 2.6 | |
| 32 | 1/4 & 3/8 nptf | 2.6 | swivel mount |
| 33 | 1/4 & 3/8 nptf | 2.6 | ports on one side |
| 34 | 1/2 & 3/4 nptf | 3.8 | |
| | <u>Vacuum Blow-Off Valve</u> | | |
| 35 | 3/8 nptf | .6 | |
| | <u>Normally Open</u> | | |
| 36 | 1/8, 1/4 & 3/8 nptf | 2.6 | |
| 37 | 1/4 nptf | 2.6 | direct mount |
| | <u>Coils, Connectors & Repair Kits</u> | | |
| 38 | 1/8, 1/4, 3/8, 1/2 & 3/4 valves | | low & high temperature |
| | <u>P.O. Check Cartridge for OEM Manifolds</u> | | |
| 39 | For OEM equipment | 2.6 | |

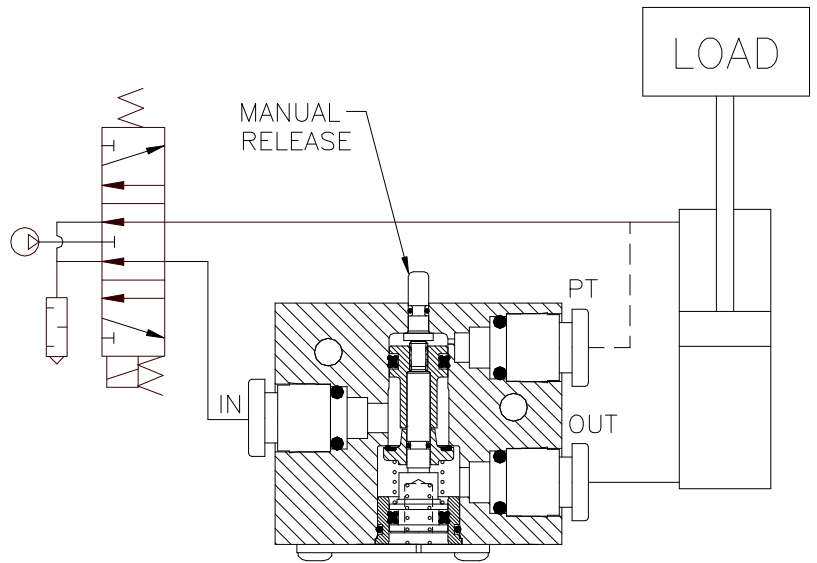
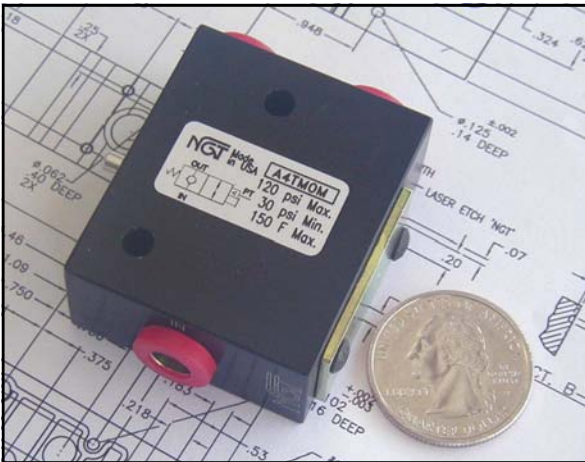
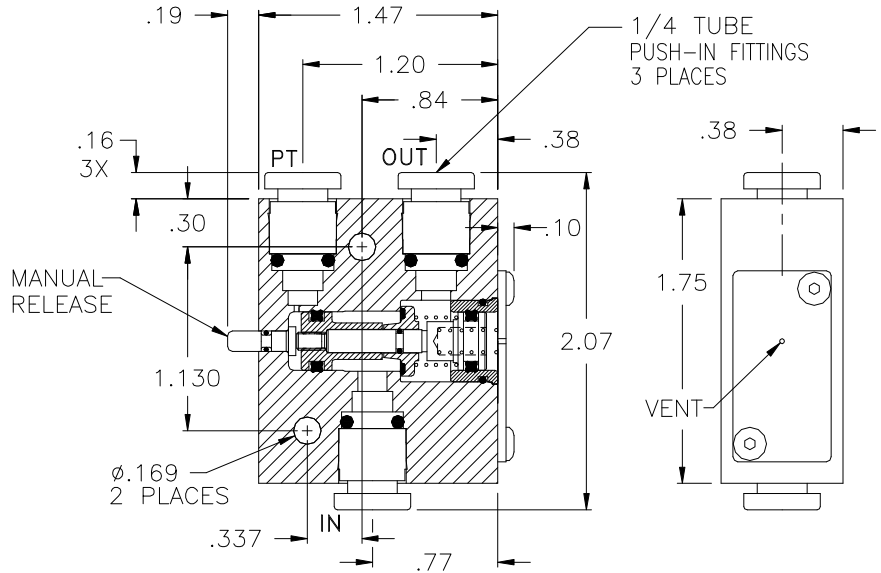
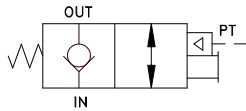
1/4 Tube Pilot-Operated Check Valve

Patents Pending

- **New Smaller Size**
- **Push-on Connectors**
- **Manual Release**
- **.000113 cc/min Leak Rate**

Basic Operation:

Lock your pneumatic device in position when a pressure drop or total loss of pressure occurs. Manual release for exhausting trapped air before maintaining the system (OSHA Requirement).



Operating Data:

Max. Pressure: 120 psi
Min. Pilot Pressure: 30 psi @ 80 psi
Leak Rate: .000113 cc/min
Temp. Range: 30 - 150 F
Cycle Rate: 1 cyc./sec. max.
Flow Capacity (Cv): .50 max. (or I.D. tube)
Cracking Pressure: 2-3 psi
Service: Properly filtered dry air or lubricated air.

| | |
|------------------|---------------|
| Model No. | 1/4 Tube |
| Manual Release | A4TM0M |



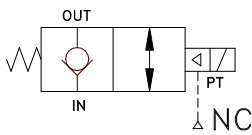
1/4 Tube Solenoid Air Pilot-Operated Locking Valves

Patents Pending

- **New Smaller Size**
- **.000113 cc/min Leak Rate**
- **Solenoid Air Pilot (3/2 NC)**
- **No Fittings Required**

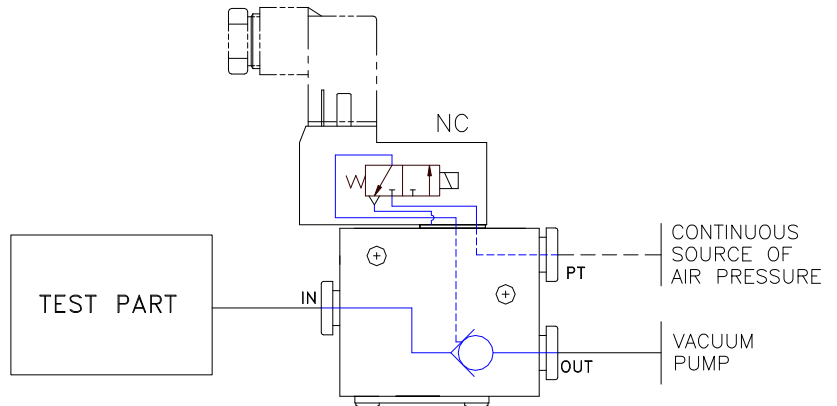
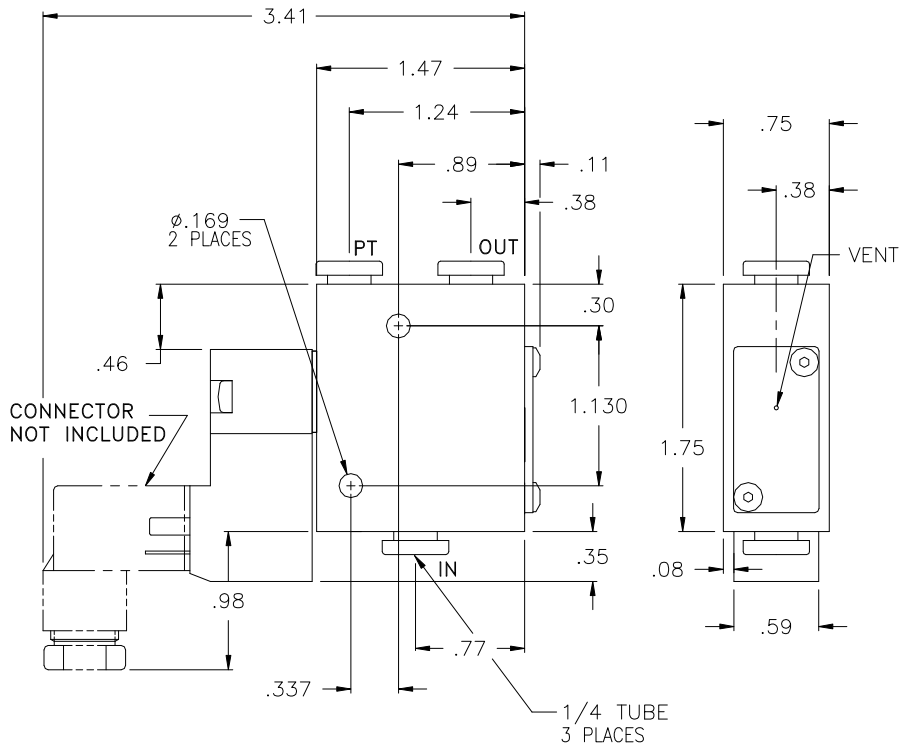
Basic Operation:

Lock your pneumatic device in position when a pressure drop or total loss of pressure occurs. The pilot signal to the valve is controlled by a normally closed 3-way solenoid valve.



Operating Data:

- Max. Pressure:** 120 psi
- Min. Pilot Pressure:** 30 psi @ 80 psi
- Leak Rate:** .000113 cc/min
- Temp. Range:** 30 - 150 F
- Cycle Rate:** 1 cyc./sec. max.
- Flow Capacity (Cv):** .50
- Cracking Pressure:** 2-3 psi
- Service:** Properly filtered dry air or lubricated air.
- Solenoid:** 3/2 normally closed
24 vdc, 2.5 watt
- **Temp Range:** 14 - 122 F
- **Protection Class:** NEMA 4 / IP 65 (EN 60529)
- **Duty Rating:** Continuous
- **Connector:** 9.4 mm (DIN 43650)
- **Pressure Rating:** 145 psi max.



| | |
|------------------|------------------|
| Model No. | 1/4 Tube |
| 24 vdc Solenoid | A4TM00S24 |



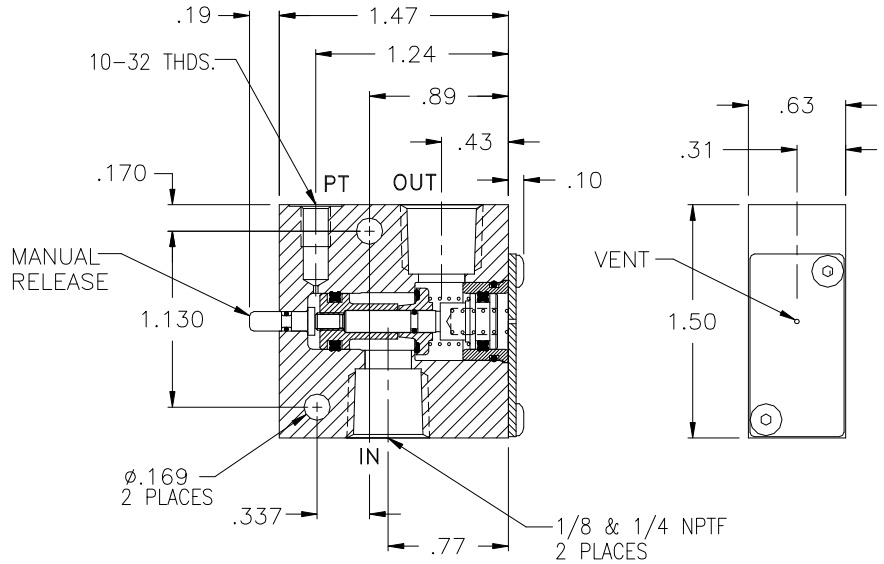
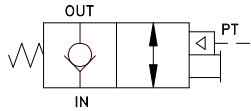
1/8 & 1/4 NPTF Pilot-Operated Locking Valves

Patents Pending

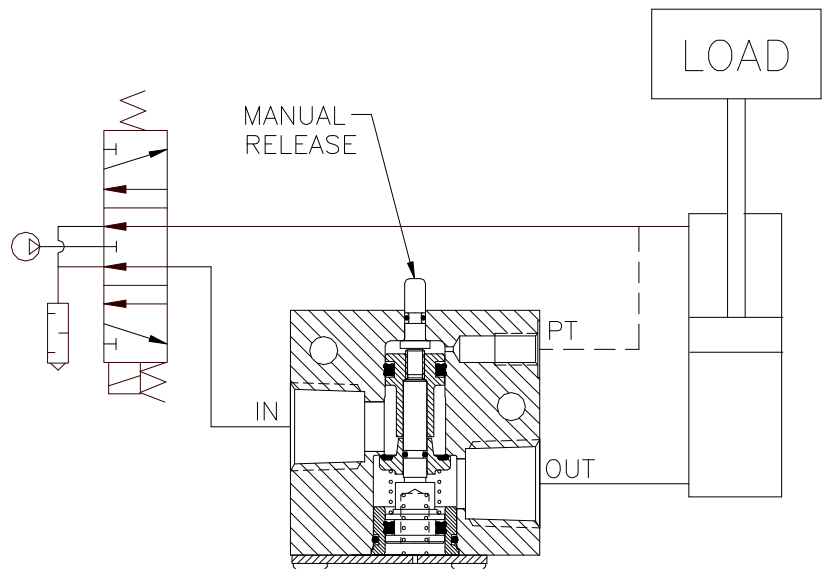
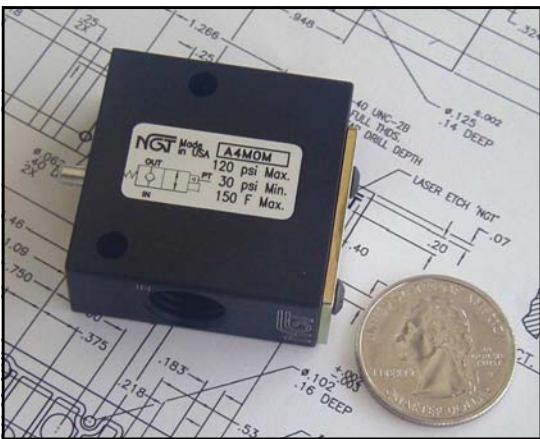
- **New Smaller Size**
- **Manual Release**
- **.000113 cc/min Leak Rate**

Basic Operation:

Lock your pneumatic device in position when a pressure drop or total loss of pressure occurs. Manual release for exhausting trapped air before maintaining the system (OSHA Requirement).



DIMENSIONS APPLY FOR BOTH 1/8 AND 1/4 MODELS



Operating Data:

- Max. Pressure:** 120 psi
- Min. Pilot Pressure:** 30 psi @ 80 psi
- Leak Rate:** .000113 cc/min
- Temp. Range:** 30 - 150 F
- Cycle Rate:** 1 cyc./sec. max.
- Flow Capacity (Cv):** 1.2
- Cracking Pressure:** 2-3 psi
- Service:** Properly filtered dry air or lubricated air.

| Model No. | 1/8 NPTF | 1/4 NPTF |
|----------------|--------------|--------------|
| Manual Release | A2M0M | A4M0M |



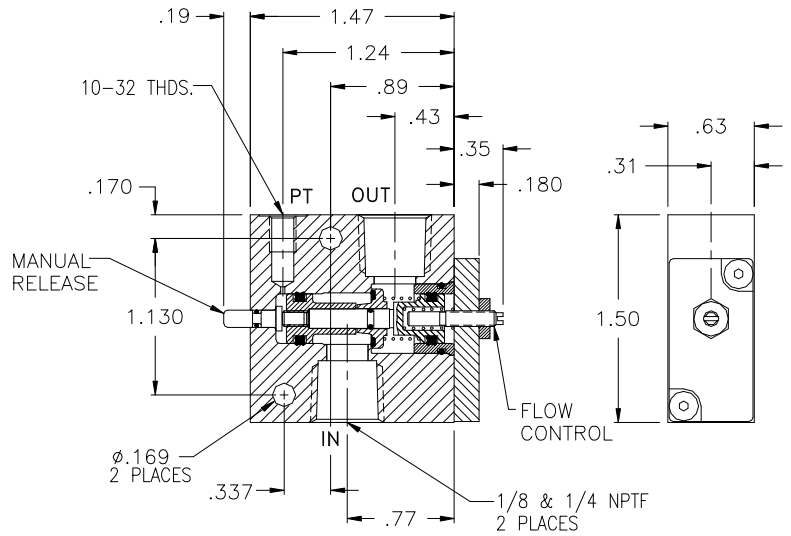
1/8 & 1/4 NPTF Pilot-Operated Locking Valves with Flow Controls

Patents Pending

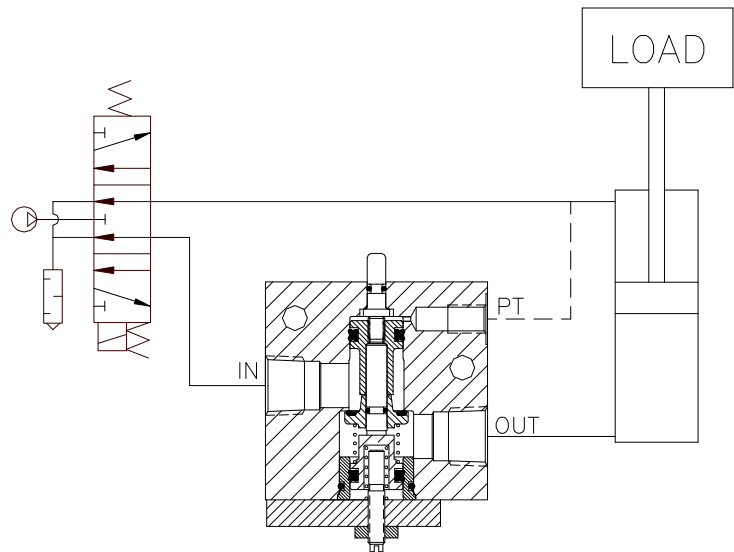
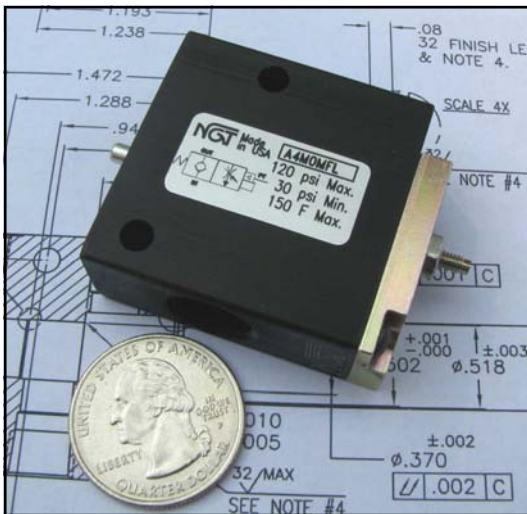
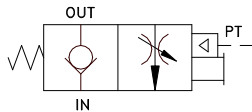
- **Manual Release (Metered)**
- **.000113 cc/min - Leak Rate**
- **Lower Loads Slowly**

Basic Operation:

Lock your pneumatic device in position when a pressure drop or total loss of pressure occurs. Slowly lower the load when the valve is piloted open. The manual release for exhausting trapped air is also metered through the flow control, so the load is lowered slowly when the manual release is depressed.



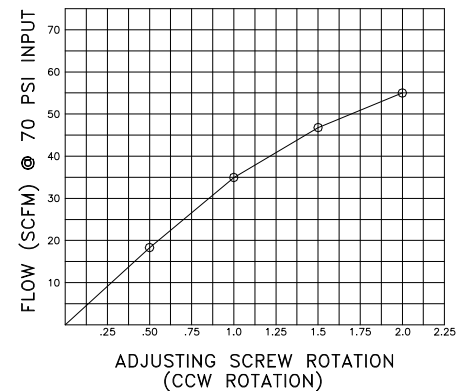
DIMENSIONS APPLY FOR BOTH 1/8 AND 1/4 MODELS



Operating Data:

- Max. Pressure:** 120 psi
- Min. Pilot Pressure:** 30 psi @ 80 psi
- Leak Rate:** .000113 cc/min
- Temp. Range:** 30 - 150 F
- Cycle Rate:** 1 cyc./sec. max.
- Flow Capacity (Cv):** 1.2
- Cracking Pressure:** 2-3 psi
- Service:** Properly filtered dry air or lubricated air.

| No. of Turns | Equivalent Diameter (in.) |
|--------------|---------------------------|
| .5 | .12 |
| 1.0 | .17 |
| 1.5 | .21 |
| 2.0 | .24 |
| 2.5 | .27 |
| 3.0 | .30 |



70 PSI INLET AT FULL PRESSURE DROP

| Model No. | 1/8 NPTF | 1/4 NPTF |
|----------------|----------------|----------------|
| Manual Release | A2MOMFL | A4MOMFL |



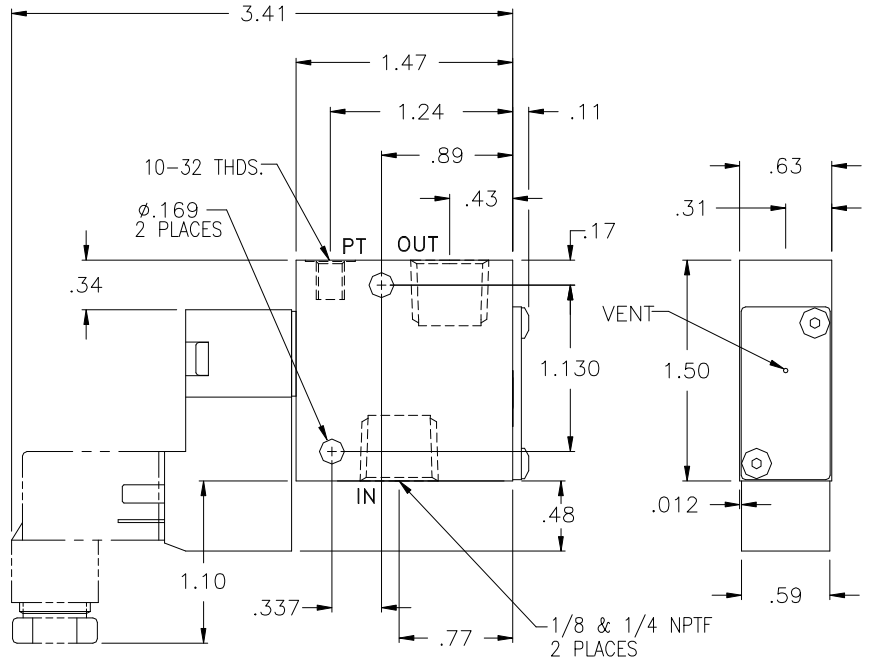
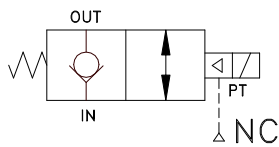
1/8 & 1/4 NPTF Solenoid Air Pilot-Operated Locking Valves

Patents Pending

- **New Smaller Size**
- **.000113 cc/min Leak Rate**
- **Solenoid Air Pilot (3/2 NC)**

Basic Operation:

Lock your pneumatic device in position when a pressure drop or total loss of pressure occurs. The pilot signal to the valve is controlled by a normally closed 3-way solenoid valve.

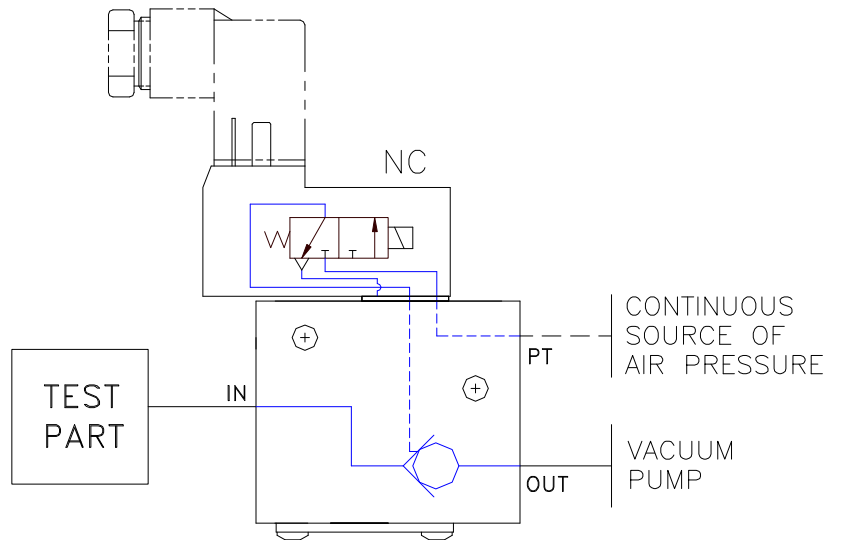


DIMENSIONS APPLY FOR BOTH 1/8 AND 1/4 MODELS

Operating Data:

- Max. Pressure:** 120 psi
- Min. Pilot Pressure:** 30 psi @ 80 psi
- Leak Rate:** .000113 cc/min
- Temp. Range:** 30 - 150 F
- Cycle Rate:** 1 cyc./sec. max.
- Flow Capacity (Cv):** 1.2
- Cracking Pressure:** 2-3 psi
- Service:** Properly filtered dry air or lubricated air.

- Solenoid:** 3/2 normally closed
24 vdc, 2.5 watt
- **Temp Range:** 14 - 122 F
- **Protection Class:** NEMA 4 / IP 65 (EN 60529)
- **Duty Rating:** Continuous
- **Connector:** 9.4 mm (DIN 43650)
- **Pressure Rating:** 145 psi max.



| Model No. | 1/8 NPTF | 1/4 NPTF |
|-----------------|-----------------|-----------------|
| 24 vdc Solenoid | A2M00S24 | A4M00S24 |

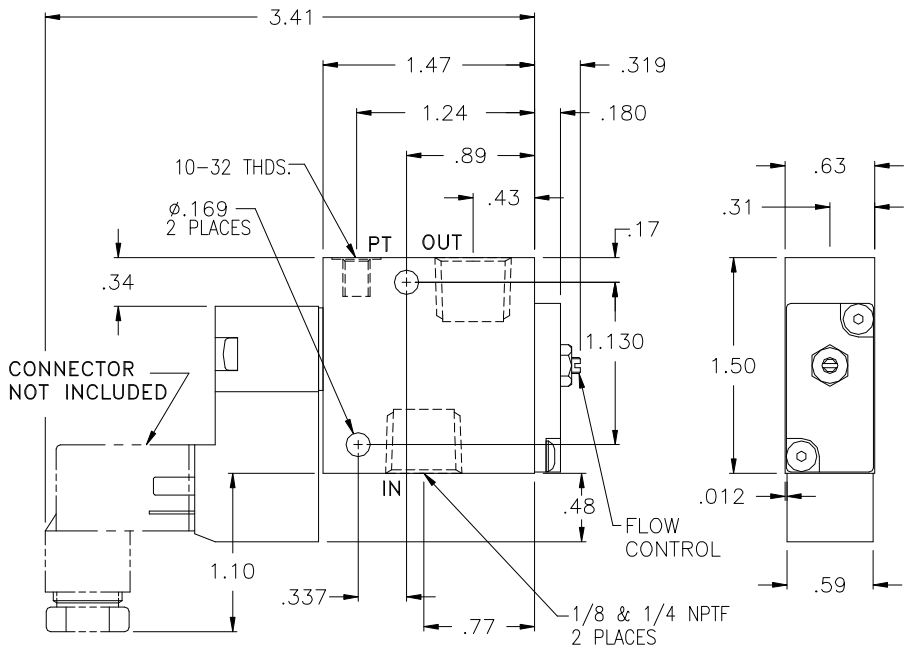
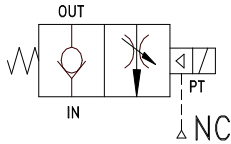
1/8 & 1/4 NPTF Solenoid Air Pilot-Operated Locking Valves with Flow Controls

Patents Pending

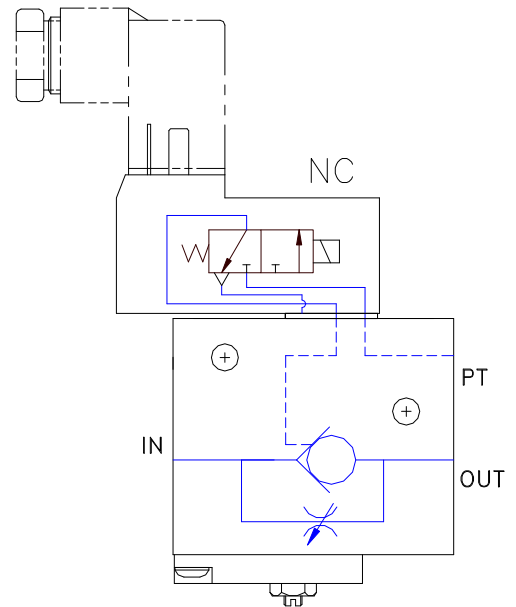
- **New Smaller Size**
- **.000113 cc/min Leak Rate**
- **Solenoid Air Pilot (3/2 NC)**
- **Lower Loads Slowly**

Basic Operation:

Lock your pneumatic device in position when a pressure drop or total loss of pressure occurs. The pilot signal to the valve, is controlled by a normally closed 3-way solenoid valve. The flow is metered from output to input.



DIMENSIONS APPLY FOR BOTH 1/8 AND 1/4 MODELS



Operating Data:

- Max. Pressure:** 120 psi
- Min. Pilot Pressure:** 30 psi @ 80 psi
- Leak Rate:** .000113 cc/min
- Temp. Range:** 30 - 150 F
- Cycle Rate:** 1 cyc./sec. max.
- Flow Capacity (Cv):** 1.2
- Cracking Pressure:** 2-3 psi
- Service:** Properly filtered dry air or lubricated air.
- Solenoid:** 3/2 normally closed
24 vdc, 2.5 watt
- **Temp Range:** 14 - 122 F
- **Protection Class:** NEMA 4 / IP 65 (EN 60529)
- **Duty Rating:** Continuous
- **Connector:** 9.4 mm (DIN 43650)
- **Pressure Rating:** 145 psi max.

| No. of Turns | Equivalent Diameter (in.) |
|--------------|---------------------------|
| .5 | .12 |
| 1.0 | .17 |
| 1.5 | .21 |
| 2.0 | .24 |
| 2.5 | .27 |
| 3.0 | .30 |

| Model No. | 1/8 NPTF | 1/4 NPTF |
|-----------------|-------------------|-------------------|
| 24 vdc Solenoid | A2M00FLS24 | A4M00FLS24 |

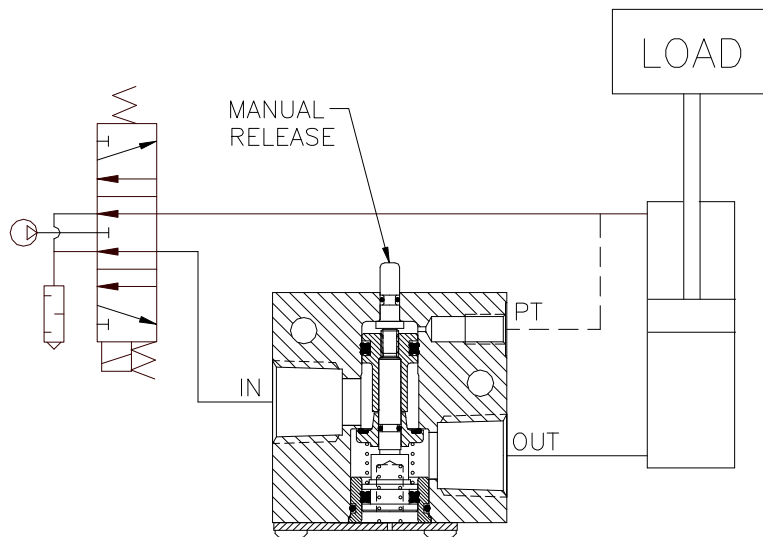
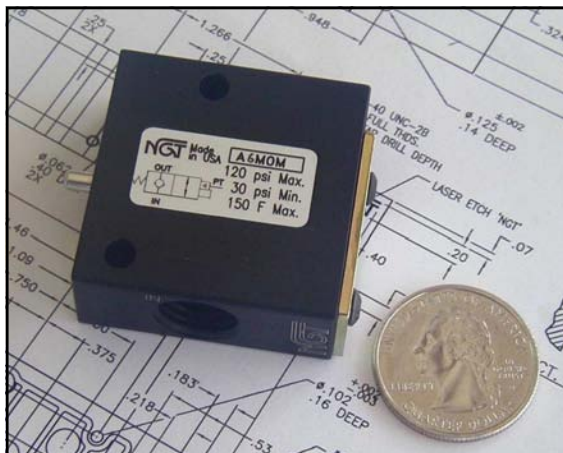
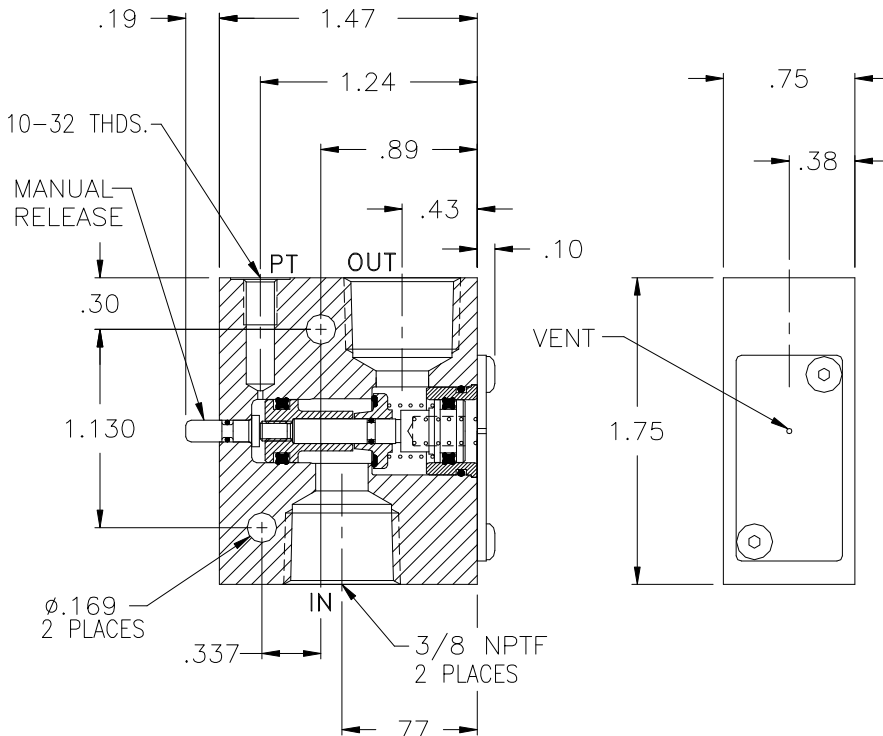
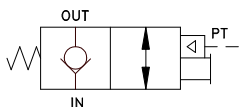
3/8 NPTF Pilot Operated Locking Valves

Patents Pending

- **New Smaller Size**
- **Manual Release**
- **.000113 cc/min Leak Rate**

Basic Operation:

Lock your pneumatic device in position when a pressure drop or total loss of pressure occurs. Manual release for exhausting trapped air before maintaining the system (OSHA Requirement).



Operating Data:

- Max. Pressure:** 120 psi
- Min. Pilot Pressure:** 30 psi @ 80 psi
- Leak Rate:** .000113 cc/min
- Temp. Range:** 30 - 150 F
- Cycle Rate:** 1 cyc./sec. max.
- Flow Capacity (Cv):** 1.2
- Cracking Pressure:** 2-3 psi
- Service:** Properly filtered dry air or lubricated air.

| | |
|-----------------------|-----------------|
| Model No. | 3/8 NPTF |
| Manual Release | A6M0M |



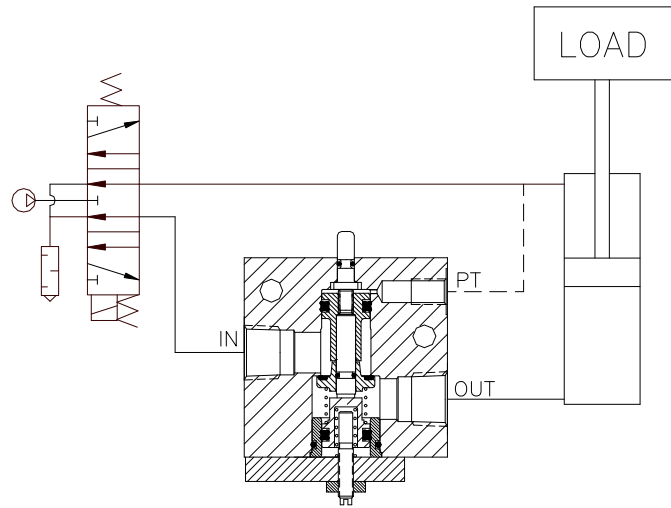
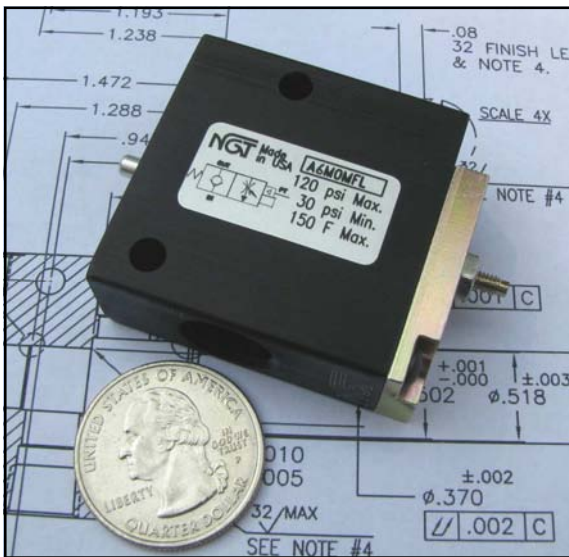
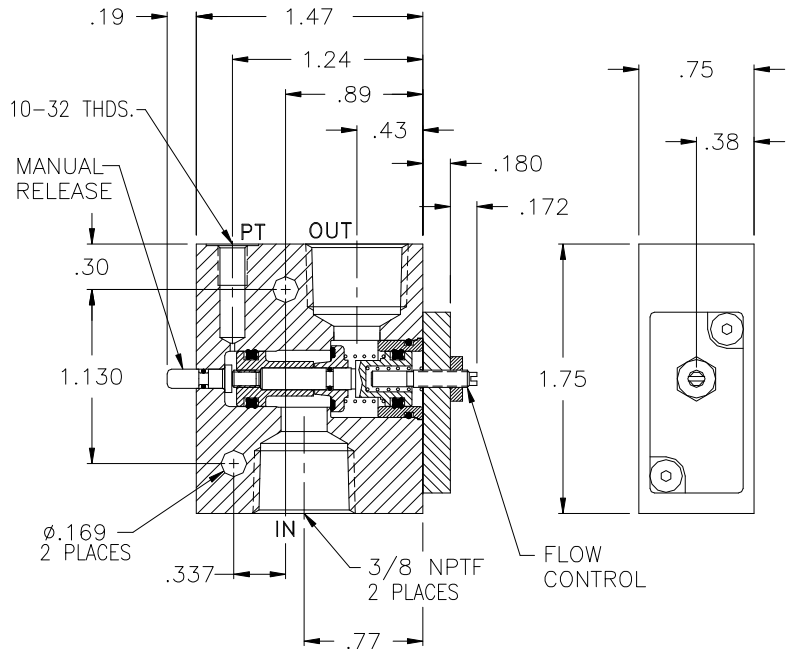
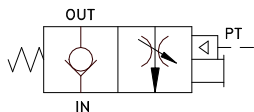
3/8 NPTF Pilot-Operated Locking Valve with Flow Control

Patents Pending

- Lower Loads Slowly
- Manual Release (metered flow)
- .000113 cc/min - Leak Rate

Basic Operation:

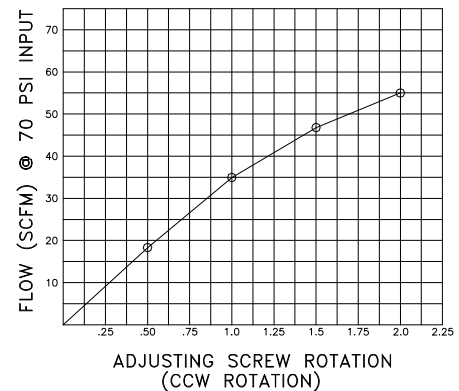
Lock your pneumatic device in position when a pressure drop or total loss of pressure occurs. Slowly lower the load when the valve is piloted open. The manual release for exhausting trapped air is also metered through the flow control, so the load is lowered slowly when the manual release is depressed.



Operating Data:

- Max. Pressure: 120 psi
- Min. Pilot Pressure: 30 psi @ 80 psi
- Leak Rate: .000113 cc/min
- Temp. Range: 30 - 150 F
- Cycle Rate: 1 cyc./sec. max.
- Flow Capacity (Cv): 1.2
- Cracking Pressure: 2-3 psi
- Service: Properly filtered dry air or lubricated air.

| No. of Turns | Equivalent Diameter (in.) |
|--------------|---------------------------|
| .5 | .12 |
| 1.0 | .17 |
| 1.5 | .21 |
| 2.0 | .24 |
| 2.5 | .27 |
| 3.0 | .30 |



70 PSI INLET AT FULL PRESSURE DROP

| | |
|----------------|----------|
| Model No. | 3/8 NPTF |
| Manual Release | A6M0MFL |



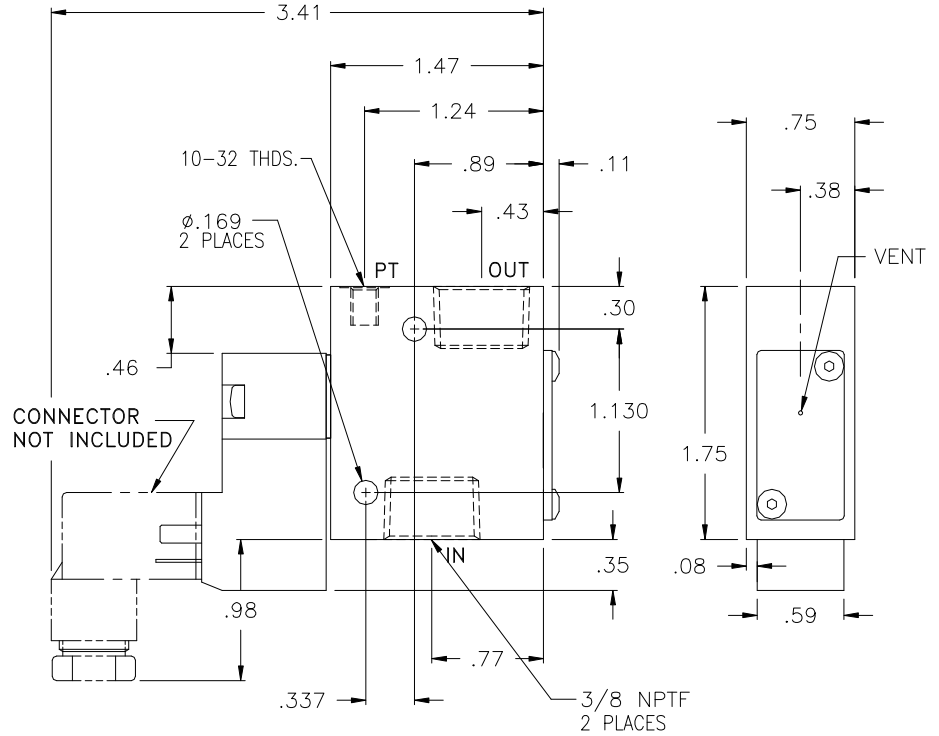
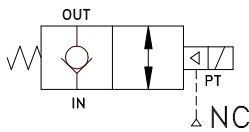
3/8 NPTF Solenoid Air Pilot-Operated Locking Valves

Patents Pending

- **New Smaller Size**
- **.000113 cc/min Leak Rate**
- **Solenoid Air Pilot (3/2 NC)**

Basic Operation:

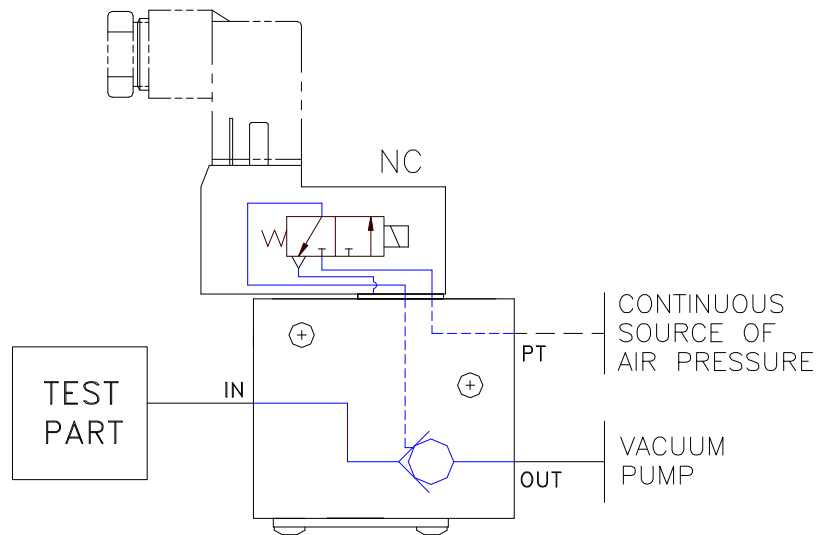
Lock your pneumatic device in position when a pressure drop or total loss of pressure occurs. The pilot signal to the valve is controlled by a normally closed 3-way solenoid valve.



Operating Data:

- Max. Pressure:** 120 psi
- Min. Pilot Pressure:** 30 psi @ 80 psi
- Leak Rate:** .000113 cc/min
- Temp. Range:** 30 - 150 F
- Cycle Rate:** 1 cyc./sec. max.
- Flow Capacity (Cv):** 1.2
- Cracking Pressure:** 2-3 psi
- Service:** Properly filtered dry air or lubricated air.

- Solenoid:** 3/2 normally closed
24 vdc, 2.5 watt
- **Temp Range:** 14 - 122 F
- **Protection Class:** NEMA 4 / IP 65 (EN 60529)
- **Duty Rating:** Continuous
- **Connector:** 9.4 mm (DIN 43650)
- **Pressure Rating:** 145 psi max.



| | |
|------------------|-----------------|
| Model No. | 3/8 NPTF |
| 24 vdc Solenoid | A6M00S24 |

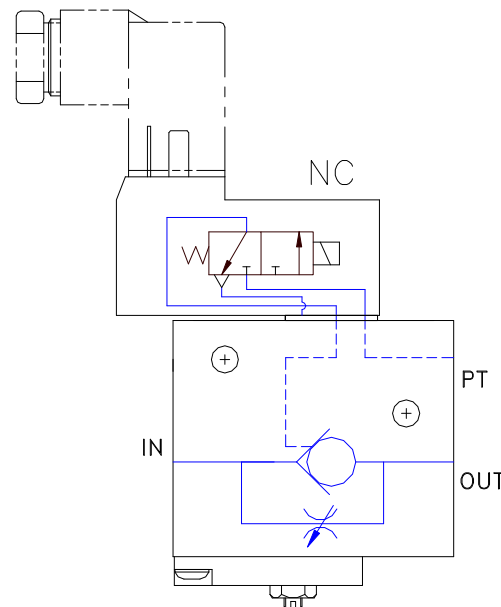
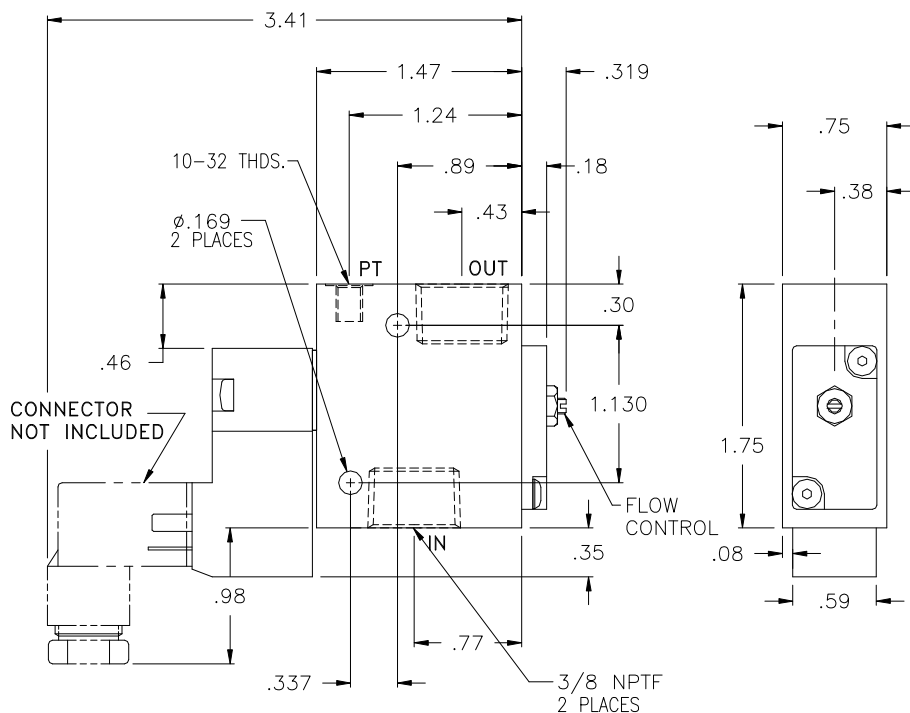
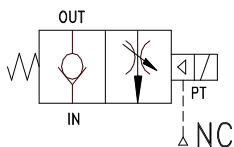
3/8 NPTF Solenoid Air Pilot-Operated Locking Valves with Flow Control 10

Patents Pending

- **New Smaller Size**
- **.000113 cc/min Leak Rate**
- **Solenoid Air Pilot (3/2 NC)**
- **Lower Loads Slowly**

Basic Operation:

Lock your pneumatic device in position when a pressure drop or total loss of pressure occurs. The pilot signal to the valve is controlled by a normally closed 3-way solenoid. The flow is metered from output to input.



Operating Data:

Max. Pressure: 120 psi
Min. Pilot Pressure: 30 psi @ 80 psi
Leak Rate: .000113 cc/min
Temp. Range: 30 - 150 F
Cycle Rate: 1 cyc./sec. max.
Flow Capacity (Cv): 1.2
Cracking Pressure: 2-3 psi
Service: Properly filtered dry air or lubricated air.
Solenoid: 3/2 normally closed
 24 vdc, 2.5 watt

| No. of Turns | Equivalent Diameter (in.) |
|--------------|---------------------------|
| .5 | .12 |
| 1.0 | .17 |
| 1.5 | .21 |
| 2.0 | .24 |
| 2.5 | .27 |
| 3.0 | .30 |

- **Temp Range:** 14 - 122 F
- **Protection Class:** NEMA 4 / IP 65 (EN 60529)
- **Duty Rating:** Continuous
- **Connector:** 9.4 mm (DIN 43650)
- **Pressure Rating:** 145 psi max.

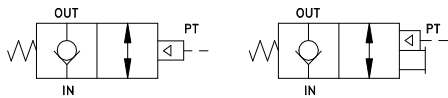
| Model No. | 3/8 NPTF |
|-----------------|-------------------|
| 24 vdc Solenoid | A6M00FLS24 |



- **Immediate Checking**
- **Optional Manual Release**
- **.000052 cc/min Leak Rate**
- **316 Stainless Available**
- **Low & High Temp**
- **G1/4 & G3/8 BSPP In Stock**
- **Non-Ferrous In Stock**

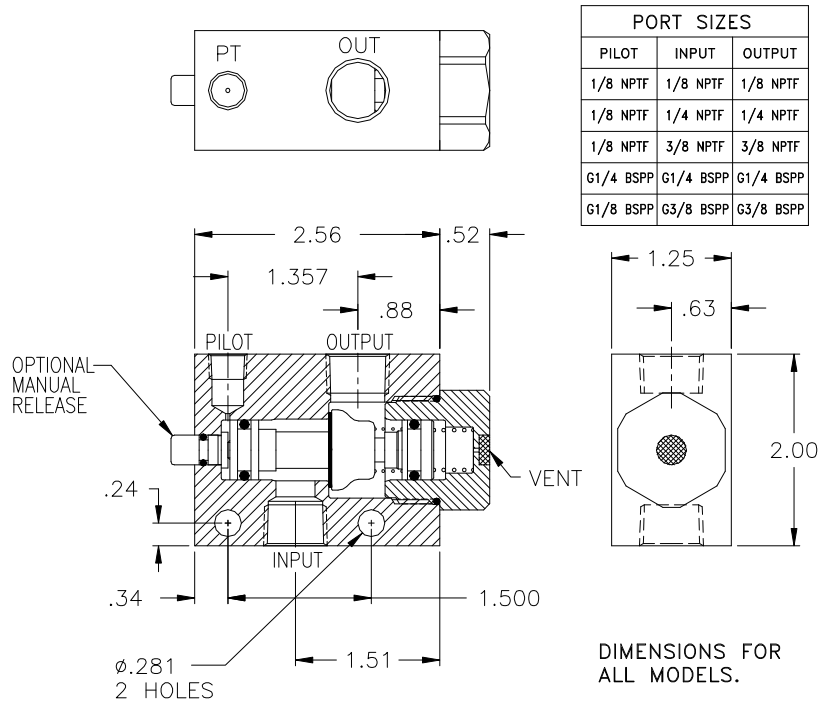
Basic Operation:

Lock your pneumatic device in position when a pressure drop or total loss of pressure occurs. Manual release for exhausting trapped air before maintaining the system (OSHA Requirement).



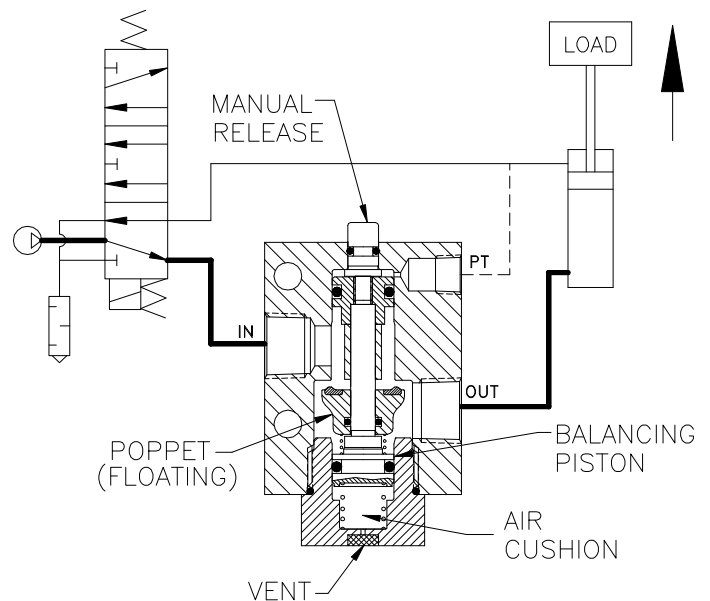
Operating Data:

- Max. Pressure:** 150 psi
- Min. Pilot Pressure:** 40 psi
- 25 psi (see table '-K18')
- Leak Rate:** .0000522 cc/min
- Temp. Range:** 30-150 F
- 30-350 F (see table '-V')
- 40 -150 F (see table '-T40')
- Cycle Rate:** 1 cyc./sec. max.
- Flow Capacity (Cv):** 1.7 (1/8 model)
- 2.6 (1/4 and 3/8 models)
- Cracking Pressure:** 1-2 psi
- Service:** Properly filtered dry air or lubricated air.



| PORT SIZES | | |
|------------|-----------|-----------|
| PILOT | INPUT | OUTPUT |
| 1/8 NPTF | 1/8 NPTF | 1/8 NPTF |
| 1/8 NPTF | 1/4 NPTF | 1/4 NPTF |
| 1/8 NPTF | 3/8 NPTF | 3/8 NPTF |
| G1/4 BSPP | G1/4 BSPP | G1/4 BSPP |
| G1/8 BSPP | G3/8 BSPP | G3/8 BSPP |

DIMENSIONS FOR ALL MODELS.



| Model No. | 1/8 NPTF | 1/4 NPTF | 3/8 NPTF | 1/4 BSPP | 3/8 BSPP |
|----------------------|--------------|--------------|--------------|-----------------|---------------|
| No Manual Release | B2M00 | B4M00 | B6M00 | BG4M00-1 | BG6M00 |
| Manual Release | B2M0M | B4M0M | B6M0M | BG4M0M-1 | BG6M0M |
| Flush Manual Release | B2MFM | B4MFM | B6MFM | BG4MFM-1 | BG6MFM |

*For high temp seals add (-V) to the model # (ex. B2M0M-V).
 For low temp seals add (-T40) to the model # (ex. B2M0M-T40).
 For a lower pilot pressure add (-K18) to the model # (ex. B2M0M-K18).
 For the non-ferrous model add (-NF) to the model # (ex. B2M0M-NF).*

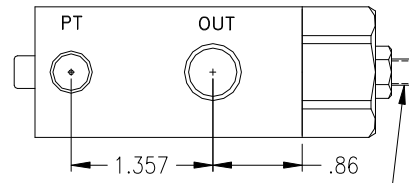
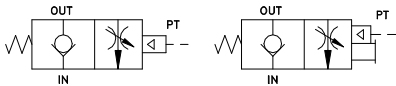


1/4, 3/8 NPTF & G1/4, G3/8 BSPP Pilot Operated Check Valves with Flow Controls Fast Advance and Slow Retract - Avoid Crash Landings

- **Avoid Crash Landings**
- **Optional Manual Release**
- **.000052 cc/min Leak Rate**
- **Non-Ferrous Available**

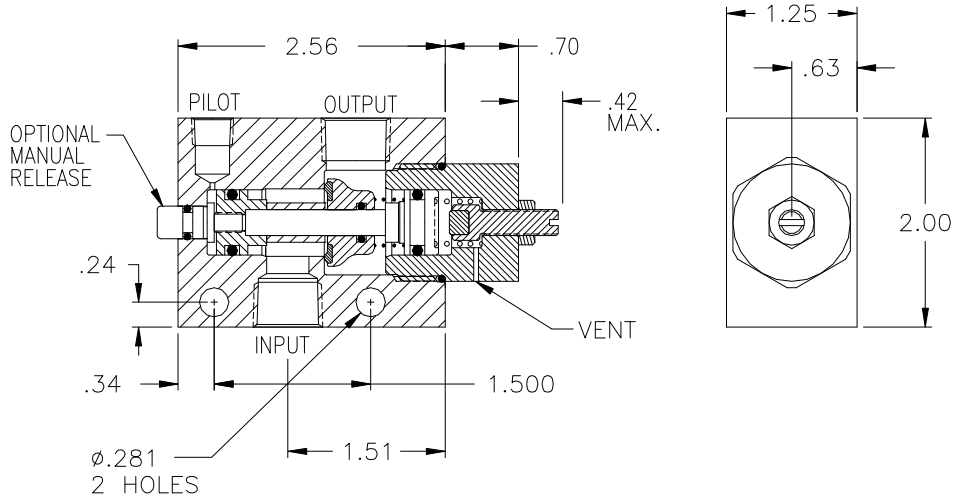
Basic Operation:

Hold position when a pressure drop or total loss of pressure occurs. Flow control meters air from the output to the input port. Manual release to exhaust trapped air before maintaining the system (OSHA Requirement).

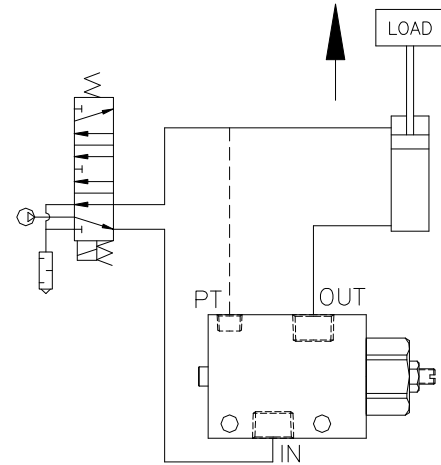


FLOW CONTROL
(CCW TO INCREASE FLOW)

| PORT SIZES | | |
|------------|-----------|-----------|
| PILOT | INPUT | OUTPUT |
| 1/8 NPTF | 1/4 NPTF | 1/4 NPTF |
| 1/8 NPTF | 3/8 NPTF | 3/8 NPTF |
| G1/4 BSPP | G1/4 BSPP | G1/4 BSPP |
| G1/8 BSPP | G3/8 BSPP | G3/8 BSPP |



| No. of Turns | Equivalent Diameter (in.) |
|--------------|---------------------------|
| .25 | .15 |
| .50 | .21 |
| .75 | .26 |
| 1.0 | .30 |
| 1.25 | .34 |
| 1.50 | .37 |
| 1.75 | .40 |



Operating Data:

Max. Pressure: 150 psi
Min. Pilot Press.: 40 psi
 25 psi (see table)
Temp. Range: 30 - 150 F
Cycle Rate: 1 cycles/sec max.
Flow Capacity (Cv): 2.6 max
Cracking Pressure: 1-2 psi
Service: Properly filtered dry or lubricated air.

| Model: | 1/4 NPTF | 3/8 NPTF | 1/4 BSPP | 3/8 BSPP |
|----------------------|----------------|----------------|-------------------|-----------------|
| No Manual Release | B4M00FL | B6M00FL | BG4M00FL-1 | BG6M00FL |
| Manual Release | B4M0MFL | B6M0MFL | BG4M0MFL-1 | BG6M0MFL |
| Flush Manual Release | B4MFMFL | B6MFMFL | BG4MFMFL-1 | BG6MFMFL |

For a lower pilot pressure add (-K18) to the model # (ex. B4M0MFL-K18).

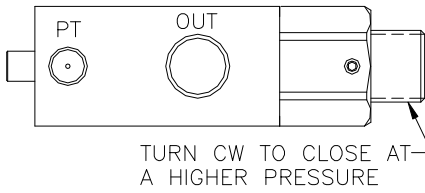


1/8, 1/4, 3/8 NPTF & G1/4, G3/8 BSPP Adjustable Pilot-Operated Check Valve for Faster Stops or to Close at a Set Pressure.

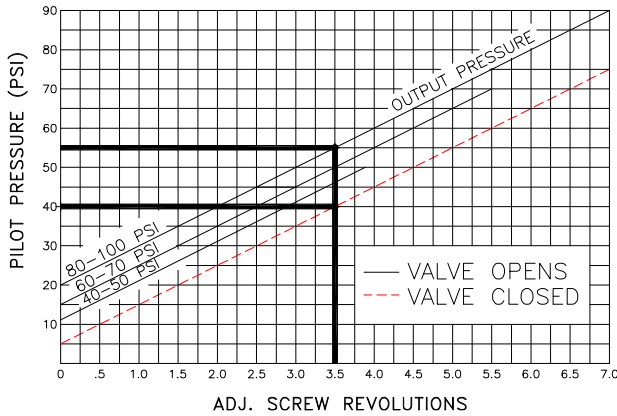
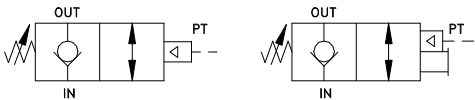
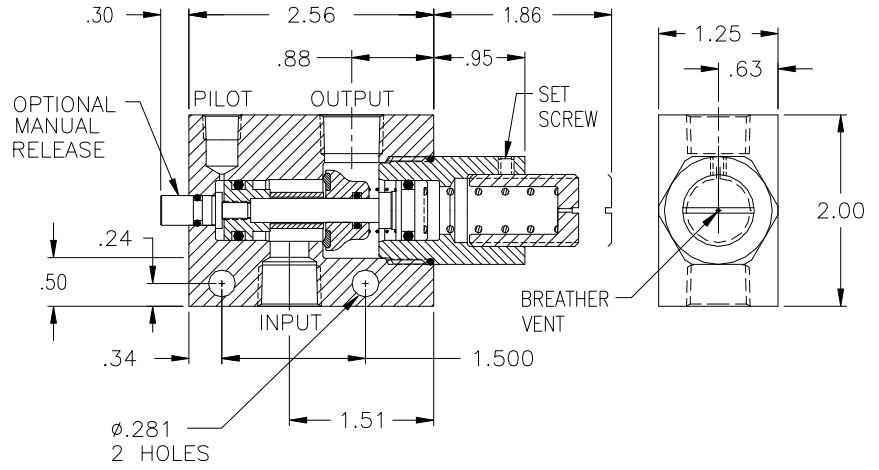
- Adjustable Pilot Pressure
- Faster Stops
- .000052 cc/min Leak Rate
- Manual Release Option

Basic Operation:

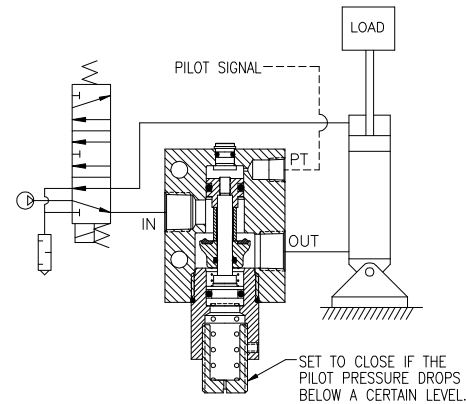
Locks any pneumatic device in position when a pressure drop or total loss of pressure occurs. Set the valve to close at a certain pressure. The pilot line reads the pressure and closes the valve when the pressure drops below the set pressure.



| PORT SIZES | | |
|------------|-----------|-----------|
| PILOT | INPUT | OUTPUT |
| 1/8 NPTF | 1/4 NPTF | 1/4 NPTF |
| 1/8 NPTF | 3/8 NPTF | 3/8 NPTF |
| G1/4 BSPP | G1/4 BSPP | G1/4 BSPP |
| G1/8 BSPP | G3/8 BSPP | G3/8 BSPP |



EXAMPLE: With the output pressure or trapped pressure at 80 psi the pilot pressure to open the valve must be a minimum of 55 psi. The valve will close when the back pressure drops to 40 psi.



Operating Data:

- Max. Pressure: 120 psi
- Min. Pilot Pressure: Adjustable
- Leak Rate: .0000522 cc/min.
- Temp. Range: 30-150 F
- Cycle Rate: 1 cyc./sec.
- Flow Capacity (Cv): 1.7 max. (1/8)
- Cracking Pressure: 2.6 max. (1/4 & 3/8)
- Service: 1-2 psi
- Properly filtered and lubricated air.

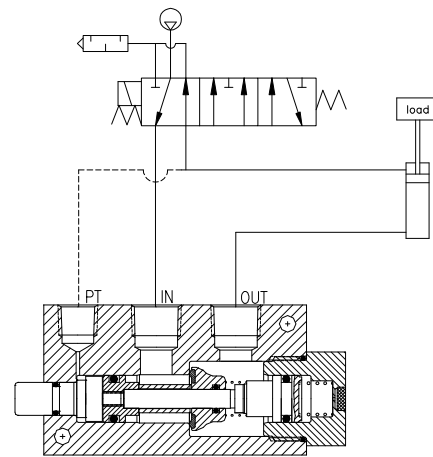
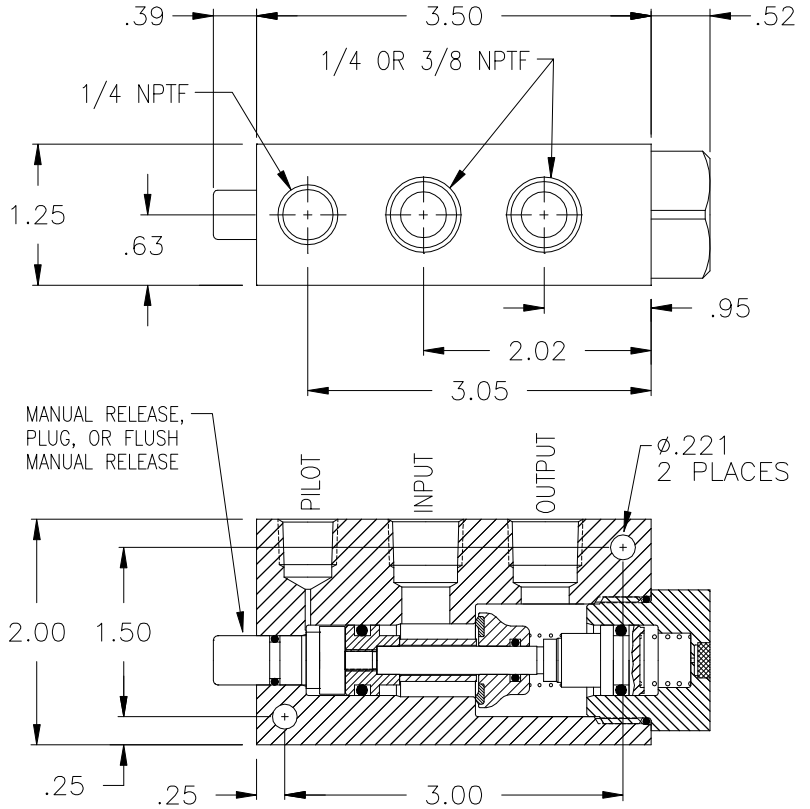
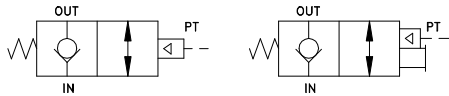
| Model No. | 1/8 NPTF | 1/4 NPTF | 3/8 NPTF | 1/4 BSPP | 3/8 BSPP |
|----------------------|----------------|----------------|----------------|-------------------|-----------------|
| No Manual Release | B2M00AD | B4M00AD | B6M00AD | BG4M00AD-1 | BG6M00AD |
| Manual Release | B2M0MAD | B4M0MAD | B6M0MAD | BG4M0MAD-1 | BG6M0MAD |
| Flush Manual Release | B2MFMAD | B4MFMAD | B6MFMAD | BG4MFMAD-1 | BG6MFMAD |



- Immediate Checking
- Optional Manual Release
- .0000522 cc/min Leak Rate
- Low & High Temp

Basic Operation:

Lock your pneumatic device in position when a pressure drop or total loss of pressure occurs. Manual release for exhausting trapped air before maintaining the system (OSHA Requirement).



Typical Locking Circuit

Operating Data:

- Max. Pressure:** 150 psi
- Min. Pilot Pressure:** 40 psi
25 psi (see table '-K18')
- Leak Rate:** .0000522 cubic cm/min
- Temp. Range:** 30 - 150 F
30 - 350 F (see table '-V')
-40 - 150 F (see table '-T40')
- Cycle Rate:** 1 cyc./sec. max.
- Flow Capacity (Cv):** 2.6
- Cracking Pressure:** 1-2 psi
- Service:** Properly filtered dry air or lubricated air.

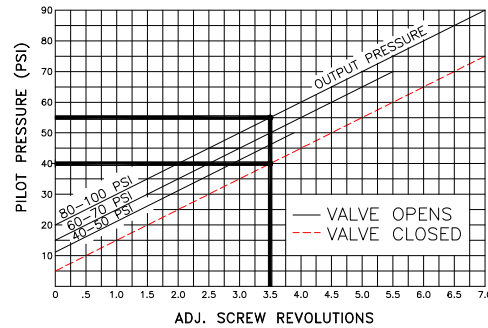
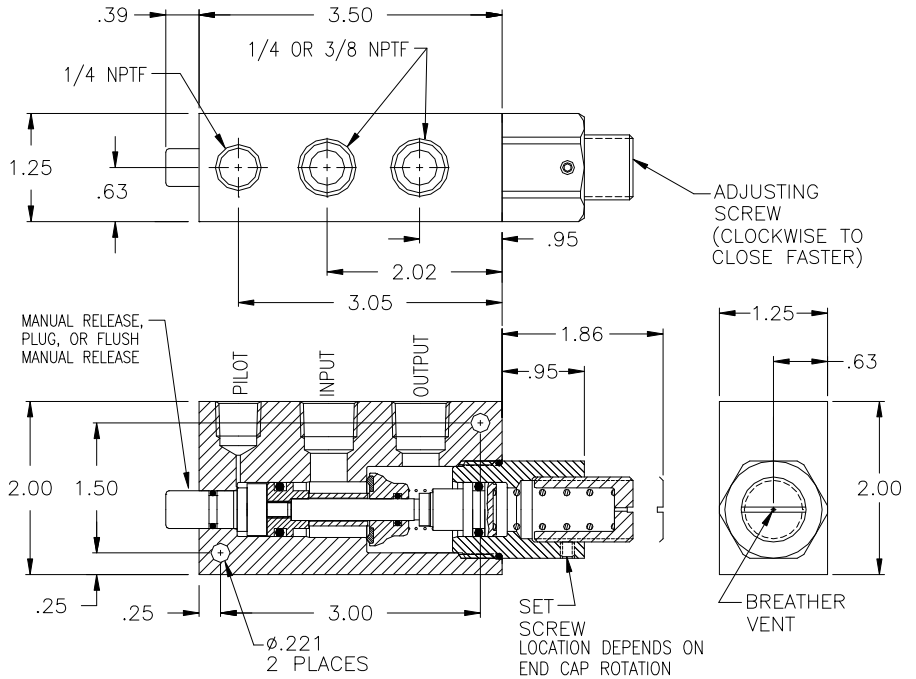
| Model No. | 1/4 NPTF | 3/8 NPTF |
|----------------------|--------------|--------------|
| No Manual Release | B4100 | B6100 |
| Manual Release | B410M | B610M |
| Flush Manual Release | B41FM | B61FM |

*For a lower pilot pressure add (-K18) to the model # (ex. B610M-K18)
For high temp seals add (-V) to the model # (ex. B4100-V)
For low temp seals add (-T40) to the model # (ex. B4100-T40)*

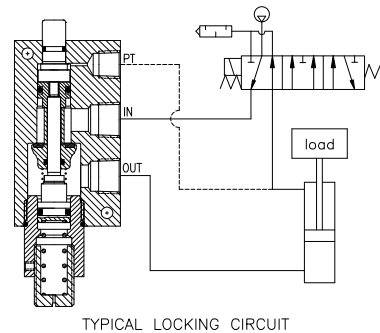
- Adjustable Pilot Pressure
- Faster Stops
- .0000522 cc/min Leak Rate
- Manual Release Option

Basic Operation:

Locks any pneumatic device in position when a pressure drop or total loss of pressure occurs. Standard pilot-operated check valves will not close fast enough when back pressure is present in the pilot line. Increasing the spring pressure causes the valve to close before all the air exhausts, resulting in faster stops.



EXAMPLE: With the output pressure or trapped pressure at 80 psi the pilot pressure to open the valve must be a minimum of 55 psi. The valve will close when the back pressure drops to 40 psi.



Operating Data:

- Max. Pressure: 120 psi
- Pilot Pressure: Adjustable
- Temp. Range: 30-150 F
- Cycle Rate: 1 cyc./sec.
- Flow Capacity (Cv): 2.6
- Cracking Pressure: 1-2 psi
- Service: Properly filtered and lubricated air.

| Models: | 1/4 NPTF | 3/8 NPTF |
|----------------------|----------------|----------------|
| No Manual Release | B4100AD | B6100AD |
| Manual Release | B410MAD | B610MAD |
| Flush Manual Release | B41FMAD | B61FMAD |

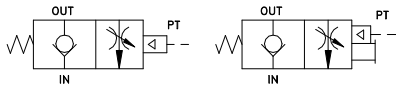
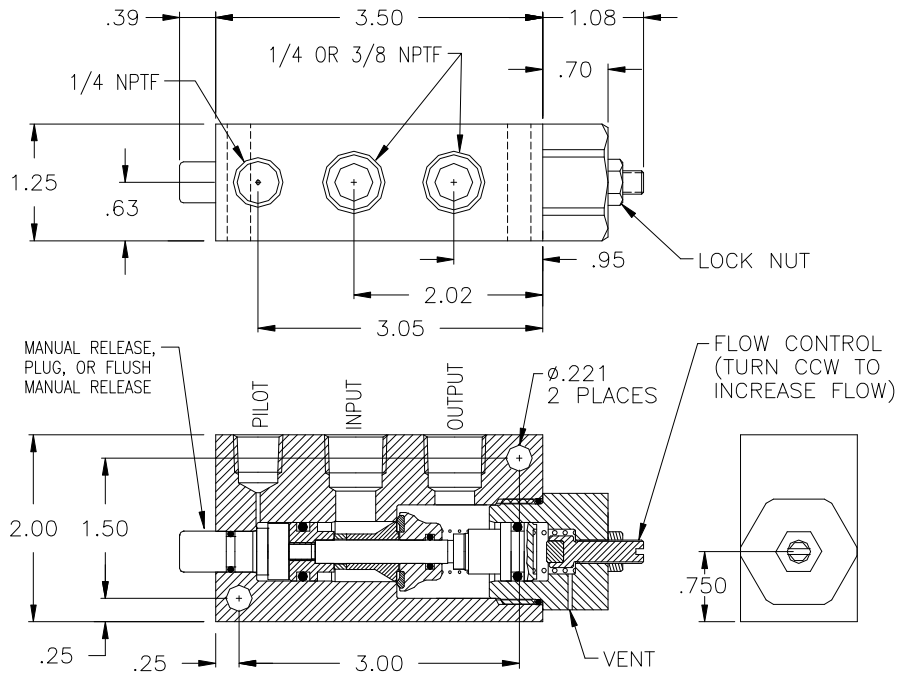


1/4 & 3/8 NPTF Pilot Operated Check Valves with Flow Controls Fast Advance and Slow Retract - Avoid Crash Landings

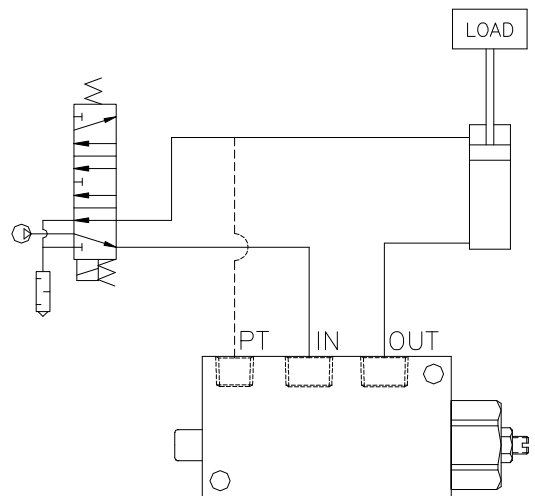
- Lower Loads Slowly
- Optional Manual Release
- .0000522 cc/min Leak Rate

Basic Operation:

Hold position when a pressure drop or total loss of pressure occurs. Flow control meters air from the output to the input port. Manual release to exhaust trapped air before maintaining the system (OSHA Requirement).



| No. of Turns | Equivalent Diameter (in.) |
|--------------|---------------------------|
| .25 | .15 |
| .50 | .21 |
| .75 | .26 |
| 1.0 | .30 |
| 1.25 | .34 |
| 1.50 | .37 |
| 1.75 | .40 |



Operating Data:

Max. Pressure: 150 psi
Min. Pilot Press.: 40 psi
 25 psi (see table)
Temp. Range: 30 - 150 F
Cycle Rate: 1 cycles/sec max.
Flow Capacity (Cv): 2.6 max.
Cracking Pressure: 1-2 psi
Service: Properly filtered dry or lubricated air.

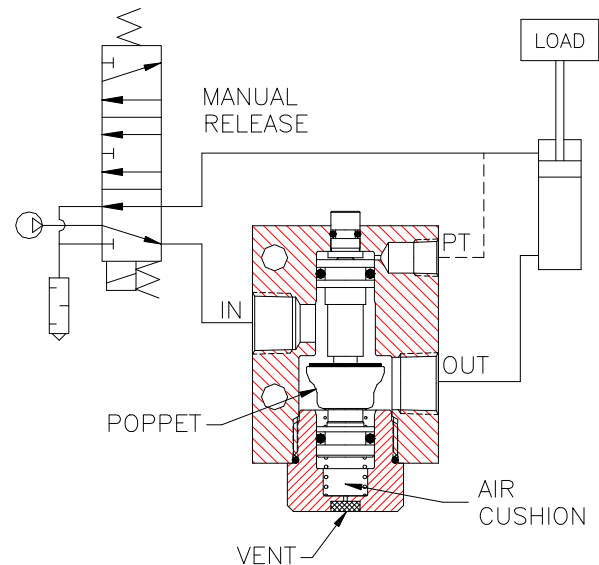
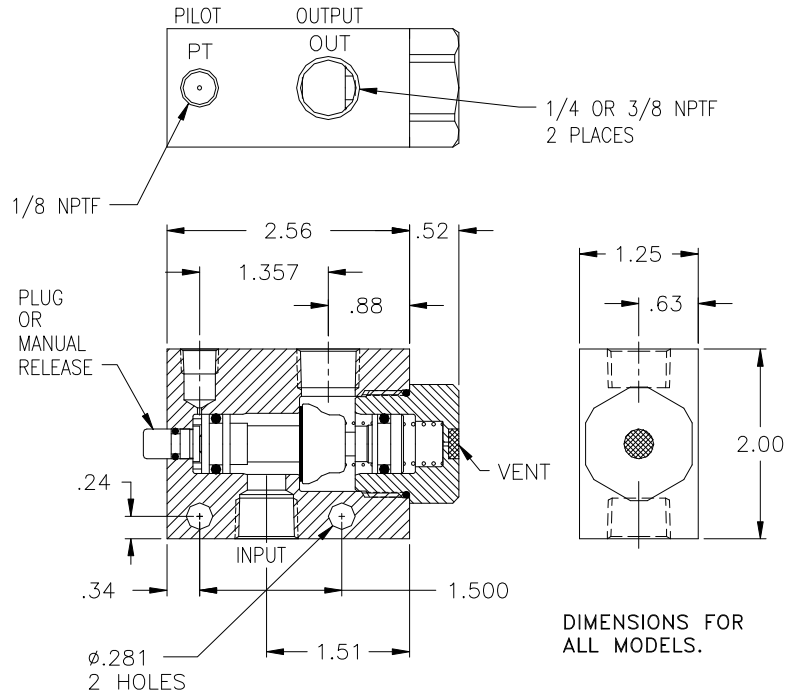
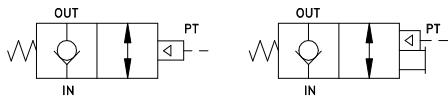
| Model: | 1/4 NPTF | 3/8 NPTF |
|--|----------|----------|
| No Manual Release | B4100FL | B6100FL |
| Manual Release | B410MFL | B610MFL |
| Flush Man. Release | B41FMFL | B61FMFL |
| <i>For a lower pilot pressure add (-K18) to the model # (ex. B610MFL-K18).</i> | | |



- Immediate Checking
- Optional Manual Release
- .0000522 cc/min Leak Rate
- Low & High Temp

Basic Operation:

Lock your pneumatic device in position when a pressure drop or total loss of pressure occurs. Manual release for exhausting trapped air before maintaining the system (OSHA Requirement).



Operating Data:

Max. Pressure: 150 psi
Min. Pilot Pressure: 40 psi
Leak Rate: .0000522 cubic cm/min
Temp. Range: 30-150 F
 30-350 F (see table '-V')
 -40-150 F (see table '-T40')
Cycle Rate: 1 cyc./sec. max.
Flow Capacity (Cv): 2.6
Cracking Pressure: 1-2 psi
Service: Properly filtered dry air or lubricated air.

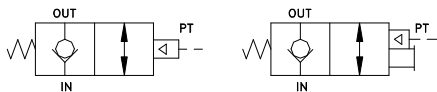
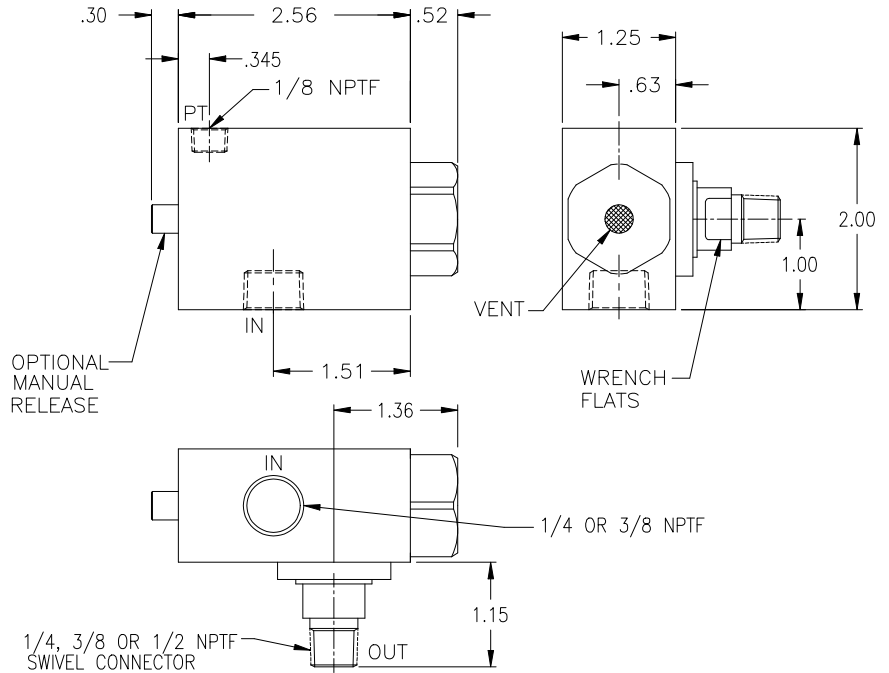
| Model No. | 1/4 NPTF | 3/8 NPTF |
|----------------------|----------------|----------------|
| No Manual Release | B4M00SS | B6M00SS |
| Manual Release | B4M0MSS | B6M0MSS |
| Flush Manual Release | B4MFMSS | B6MFMSS |

For high temp seals add (-V) to the model # (ex. B4M0MSS-V).
For low temp seals add (-T40) to the model # (ex. B4M0MSS-T40).

- **Optional Manual Release**
- **.0000522 cc/min Leak Rate**
- **Direct Mounting Swivel**

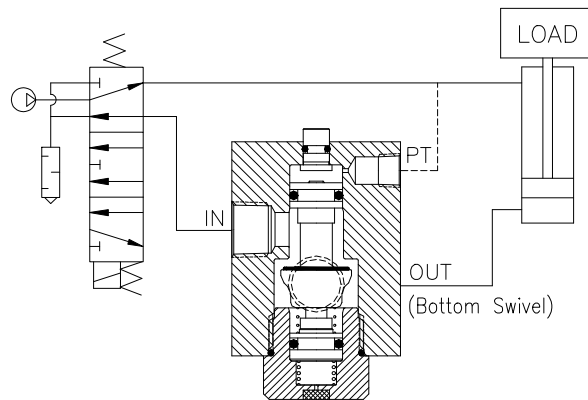
Basic Operation:

Locks any pneumatic device in position when a pressure drop or total loss of pressure occurs. Manual release removes trapped air before maintaining the system (OSHA requirement).



Operating Data:

- Max. Pressure:** 150 psi
- Min. Pilot Pressure:** 40 psi
25 psi (see table)
- Temp. Range:** 30-150 F
-40-150 F (low temp)
- Cycle Rate:** 1 cyc./sec. max.
- Flow Capacity (Cv):** 2.6
- Cracking Pressure:** 1-2 psi
- Service:** Properly filtered dry air or lubricated air.



| Models | 1/4 Swivel | 3/8 Swivel | 1/2 Swivel |
|----------------------------|-----------------|-----------------|-----------------|
| 1/4 NPTF Input Port | | | |
| No Manual Release | B4S00-25 | B4S00-38 | B4S00-50 |
| Manual Release | B4S0M-25 | B4S0M-38 | B4S0M-50 |
| Flush Man. Release | B4SFM-25 | B4SFM-38 | B4SFM-50 |
| 3/8 NPTF Input Port | | | |
| No Manual Release | B6S00-25 | B6S00-38 | B6S00-50 |
| Manual Release | B6S0M-25 | B6S0M-38 | B6S0M-50 |
| Flush Man. Release | B6SFM-25 | B6SFM-38 | B6SFM-50 |

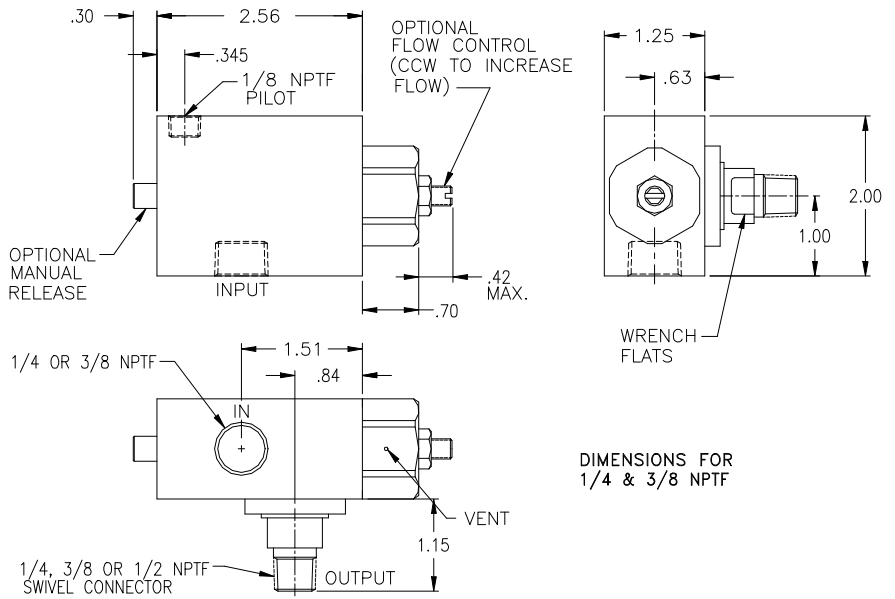
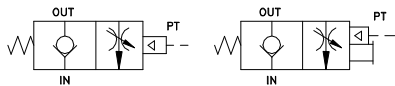
*For low temp version add a (-T40) to the end of the model # (Ex: B4S00-25-T40).
For low pilot pressure add a (-K18) to the end of the model # (Ex: B4S00-K18).*



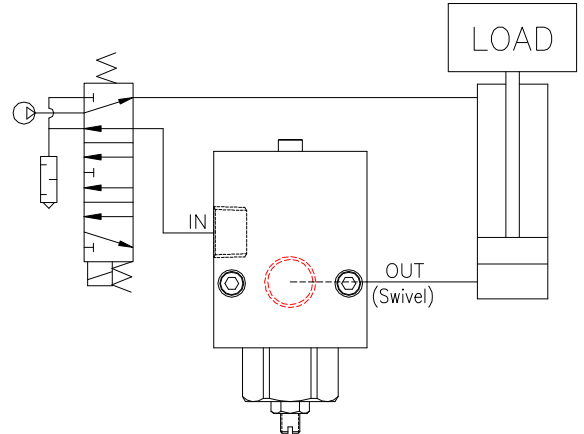
- **Optional Manual Release**
- **.0000522 cc/min Leak Rate**
- **Swivel Mount**
- **Lower Loads Slowly**

Basic Operation:

Hold position when a pressure drop or total loss of pressure occurs. Fast advance and slow retract to avoid crash landings. Manual release to exhaust trapped air before maintaining the system (OSHA Requirement).



| No. of Turns | Equivalent Diameter (in.) |
|--------------|---------------------------|
| .25 | .15 |
| .50 | .21 |
| .75 | .26 |
| 1.0 | .30 |
| 1.25 | .34 |
| 1.50 | .37 |
| 1.75 | .40 |



Operating Data:

- Max. Pressure:** 150 psi
- Min. Pilot Pressure:** 40 psi
- 25 psi (see table)
- Cycle Rate:** 1 cyc./sec.
- Temp. Range:** 30-150 F
- Flow Capacity (Cv):** 2.6 max.
- Cracking Pressure:** 1-2 psi
- Service:** Properly filtered and lubricated air or dry air.

Models:

| 1/4 NPTF Input Port | 1/4 Swivel | 3/8 Swivel | 1/2 Swivel |
|----------------------------|-------------------|-------------------|-------------------|
| No Manual Release | B4S00FL-25 | B4S00FL-38 | B4S00FL-50 |
| Manual Release | B4S0MFL-25 | B4S0MFL-38 | B4S0MFL-50 |
| Flush Manual Release | B4SFMFL-25 | B4SFMFL-38 | B4SFMFL-50 |
| 3/8 NPTF Input Port | 1/4 Swivel | 3/8 Swivel | 1/2 Swivel |
| No Manual Release | B6S00FL-25 | B6S00FL-38 | B6S00FL-50 |
| Manual Release | B6S0MFL-25 | B6S0MFL-38 | B6S0MFL-50 |
| Flush Manual Release | B6SFMFL-25 | B6SFMFL-38 | B6SFMFL-50 |

For a lower pilot pressure add (-K18) to the model # (Ex: B6S0MFL-25-K18)

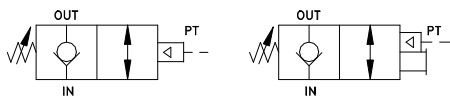


1/4, 3/8 and 1/2 NPTF Swivel Mount Pilot-Operated Check Valves with 'Quick Close' Adjustment

- **Optional Manual Release**
- **.0000522 cc/min Leak Rate**
- **'Quick Close' Operation**
- **Direct Mounting Swivel**

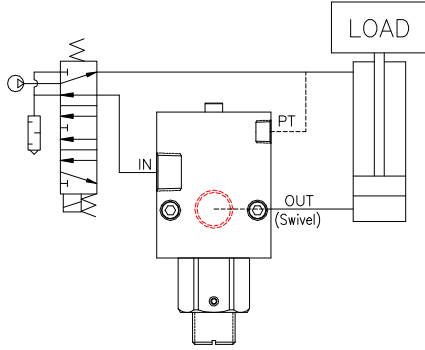
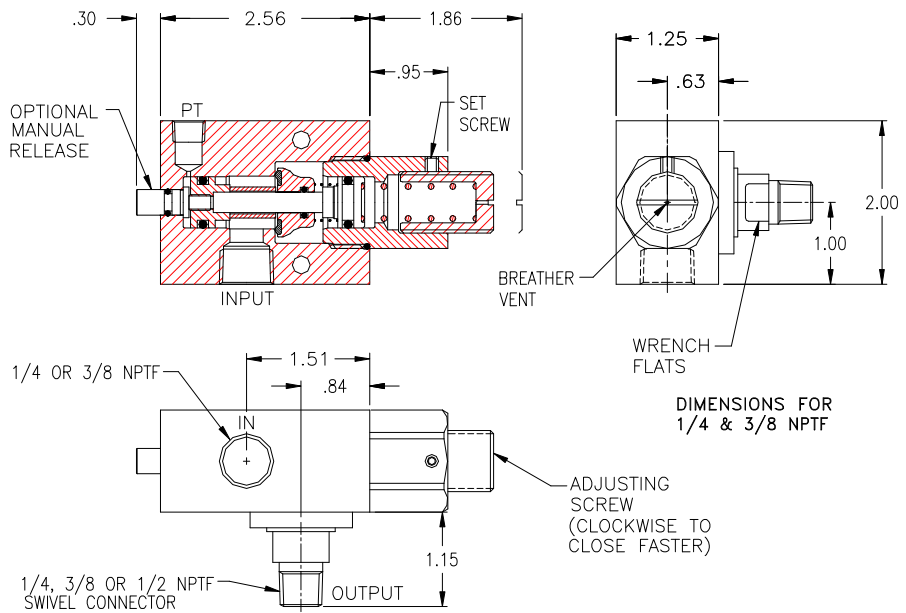
Basic Operation:

Locks any pneumatic device in position when a pressure drop or total loss of pressure occurs. Standard pilot-operated check valves will not close fast enough when back pressure is present in the pilot line. Increasing the spring pressure causes the valve to close at a higher pilot pressure or before all the air exhausts, resulting in faster stops. Optional manual and flush manual release.



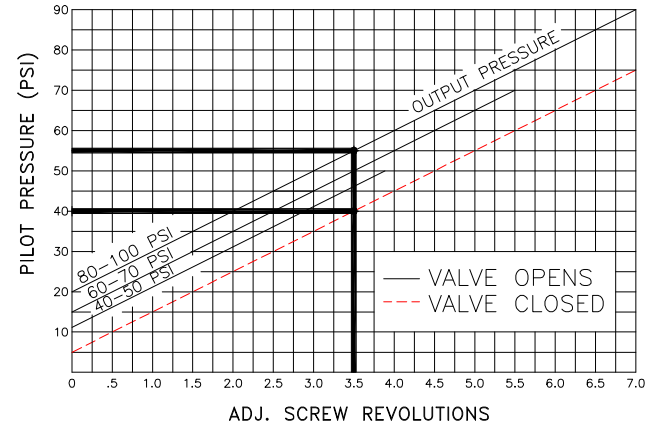
Operating Data:

- Max. Pressure:** 120 psi
- Min. Pilot Pressure:** Adjustable
- Temp. Range:** 30-150 F
- Cycle Rate:** 1 cyc./sec.
- Flow Capacity (Cv):** 2.6
- Cracking Pressure:** 1-2 psi
- Service:** Properly filtered and lubricated air.



| MODELS | | | |
|---------------------|-------------------|-------------------|-------------------|
| 1/4 NPTF Input Port | | | |
| | 1/4 Swivel | 3/8 Swivel | 1/2 Swivel |
| No Manual Release | B4S00AD-25 | B4S00AD-38 | B4S00AD-50 |
| Manual Release | B4S0MAD-25 | B4S0MAD-38 | B4S0MAD-50 |
| Flush Release | B4SFMAD-25 | B4SFMAD-38 | B4SFMAD-50 |

| 3/8 NPTF Input Port | | | |
|---------------------|-------------------|-------------------|-------------------|
| | 1/4 Swivel | 3/8 Swivel | 1/2 Swivel |
| No Manual Release | B6S00AD-25 | B6S00AD-38 | B6S00AD-50 |
| Manual Release | B6S0MAD-25 | B6S0MAD-38 | B6S0MAD-50 |
| Flush Release | B6SFMAD-25 | B6SFMAD-38 | B6SFMAD-50 |



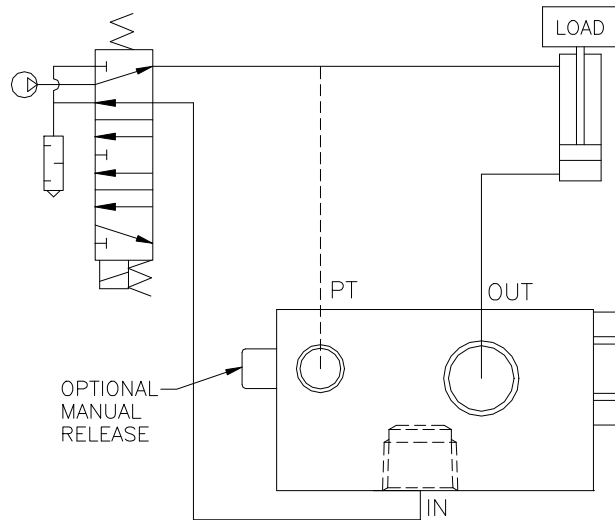
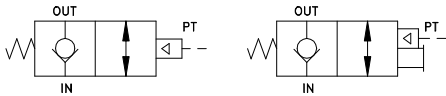
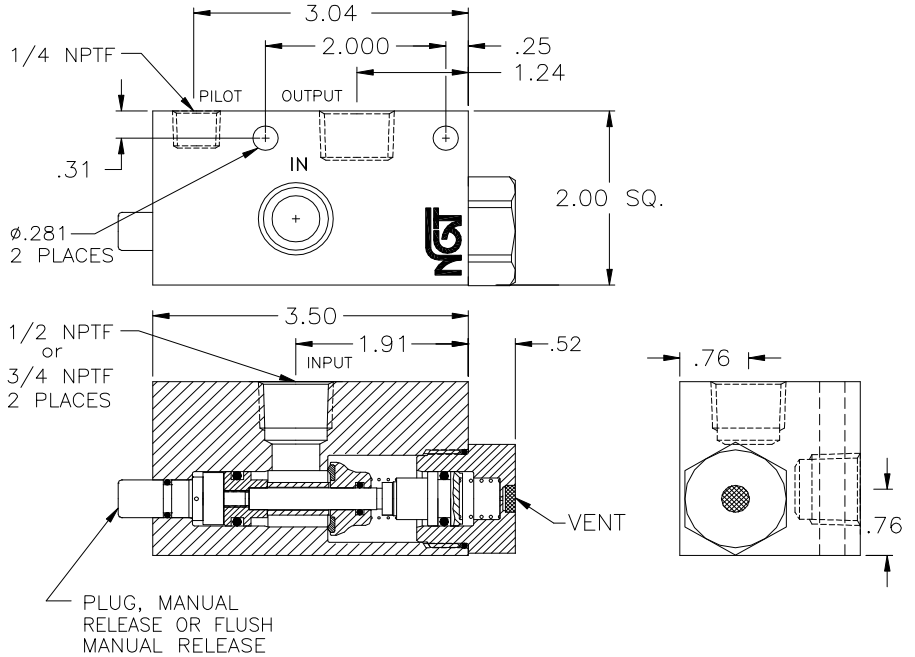
EXAMPLE: With the output pressure or trapped pressure at 80 psi the pilot pressure to open the valve must be a minimum of 55 psi. The valve will close when the back pressure drops to 40 psi.



- **Immediate Checking**
- **Optional Manual Release**
- **.0000522 cc/min Leak Rate**
- **Low & High Temp**

Basic Operation:

Lock your pneumatic device in position when a pressure drop or total loss of pressure occurs. Manual release for exhausting trapped air before maintaining the system (OSHA Requirement).



Operating Data:

Max. Pressure: 150 psi
Min. Pilot Pressure: 40 psi
 25 psi (see table '-K18')
Leak Rate: .0000522 cc/min
Temp. Range: 30-150 F
 30-350 F (see table '-V')
 -40-150 F (see table '-T40')
Cycle Rate: 1 cyc./sec. max.
Flow Capacity (Cv): 3.8
Cracking Pressure: 1-2 psi
Service: Properly filtered dry air or lubricated air.

| Model No. | 1/2 NPTF | 3/4 NPTF |
|---|--------------|---------------|
| No Manual Release | B8100 | B12100 |
| Manual Release | B810M | B1210M |
| Flush Manual Release | B81FM | B121FM |
| For a lower pilot pressure add (-K18) to the model # (ex. B810M-K18). For high temp seals add (-V) to the model # (ex. B810M-V). For low temp seal add (-T40) to the model # (ex. B810M-T40). | | |

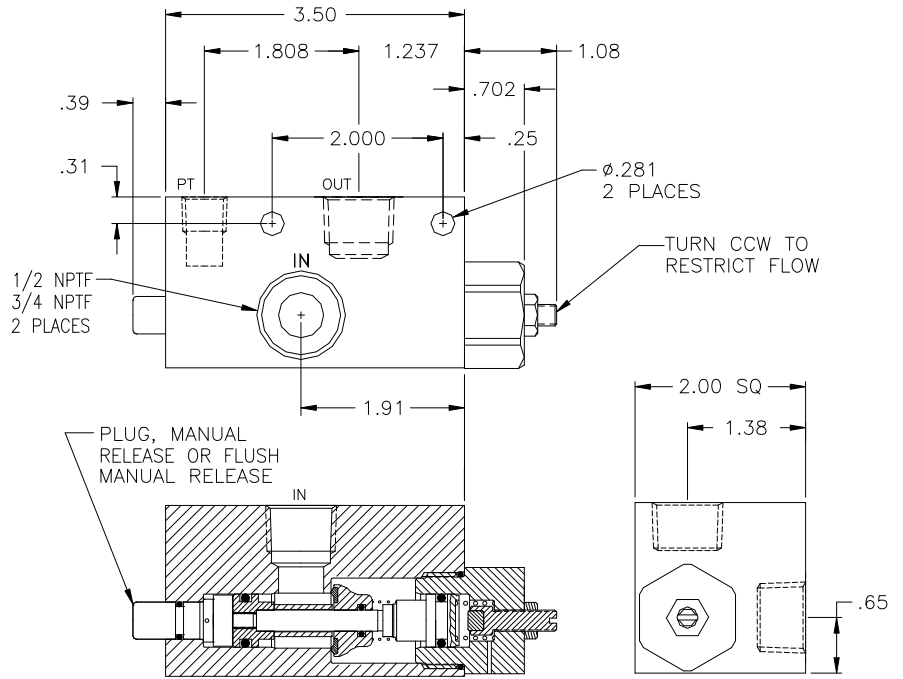
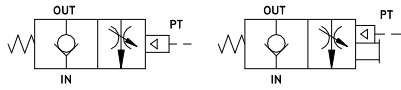


1/2 & 3/4 NPTF Pilot Operated Check Valves with Flow Controls Fast Advance and Slow Retract - Avoid Crash Landings

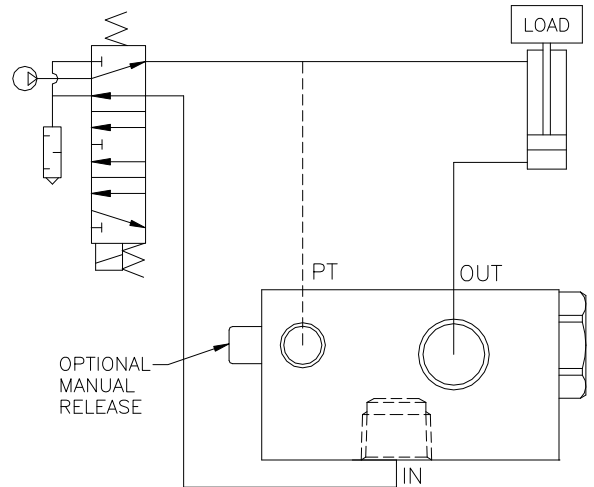
- Lower Loads Slowly
- Optional Manual Release
- .0000522 cc/min Leak Rate

Basic Operation:

Hold position when a pressure drop or total loss of pressure occurs. Flow control meters air from the output to the input port. Manual release to exhaust trapped air before maintaining the system (OSHA Requirement).



| No. of Turns | Equivalent Diameter (in.) |
|--------------|---------------------------|
| .25 | .15 |
| .50 | .21 |
| .75 | .26 |
| 1.0 | .30 |
| 1.25 | .34 |
| 1.50 | .37 |
| 1.75 | .40 |
| 2.00 | .43 |
| 2.25 | .45 |
| 2.50 | .48 |
| 2.75 | .50 |



Operating Data:

- Max. Pressure:** 150 psi
Min. Pilot Press.: 40 psi
 25 psi (see table)
Temp. Range: 30 - 150 F
Cycle Rate: 1 cycles/sec max.
Flow Capacity (Cv): 3.8 max.
Cracking Pressure: 1-2 psi
Service: Properly filtered dry or lubricated air.

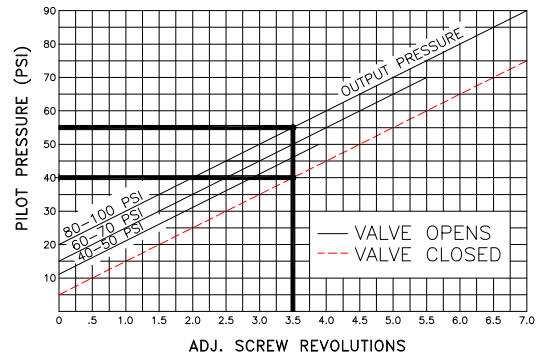
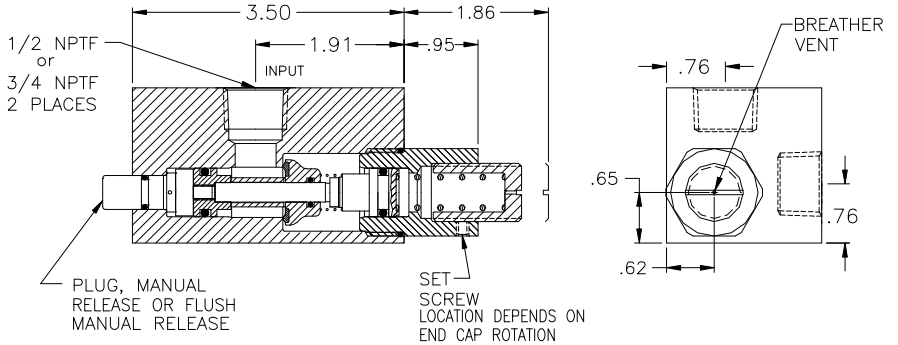
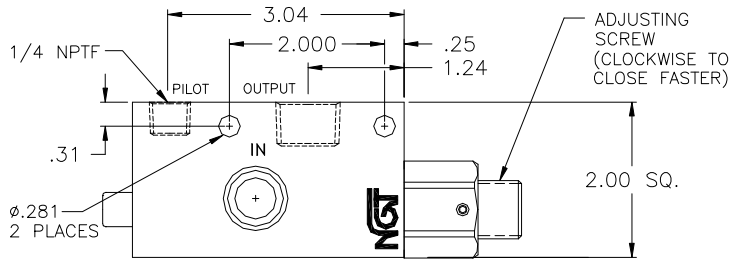
| Model: | 1/2 NPTF | 3/4 NPTF |
|--------------------|----------------|-----------------|
| No Manual Release | B8100FL | B12100FL |
| Manual Release | B810MFL | B1210MFL |
| Flush Man. Release | B81FMFL | B121FMFL |

For a lower pilot pressure add (-K18) to the model #
(ex: B810MFL-K18).

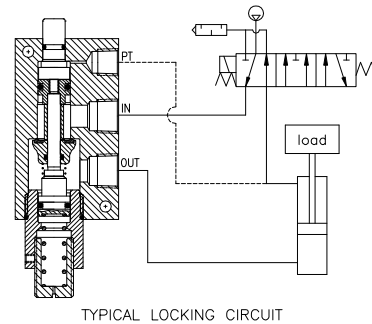
- **Adjustable Pilot Pressure**
- **Faster Stops**
- **.0000522 cc/min Leak Rate**
- **Manual Release Option**

Basic Operation:

Locks any pneumatic device in position when a pressure drop or total loss of pressure occurs. Standard pilot-operated check valves will not close fast enough when back pressure is present in the pilot line. Increasing the spring pressure causes the valve to close before all the air exhausts, resulting in faster stops.



EXAMPLE: With the output pressure or trapped pressure at 80 psi the pilot pressure to open the valve must be a minimum of 55 psi. The valve will close when the back pressure drops to 40 psi.



Operating Data:

- Max. Pressure:** 120 psi
- Pilot Pressure:** Adjustable
- Temp. Range:** 30-150 F
- Cycle Rate:** 1 cyc./sec.
- Flow Capacity (Cv):** 3.8 max.
- Cracking Pressure:** 1-2 psi
- Service:** Properly filtered and lubricated air.

| Models: | 1/2 NPTF | 3/4 NPTF |
|----------------------|----------------|-----------------|
| No Manual Release | B8100AD | B12100AD |
| Manual Release | B810MAD | B1210MAD |
| Flush Manual Release | B81FMAD | B121FMAD |

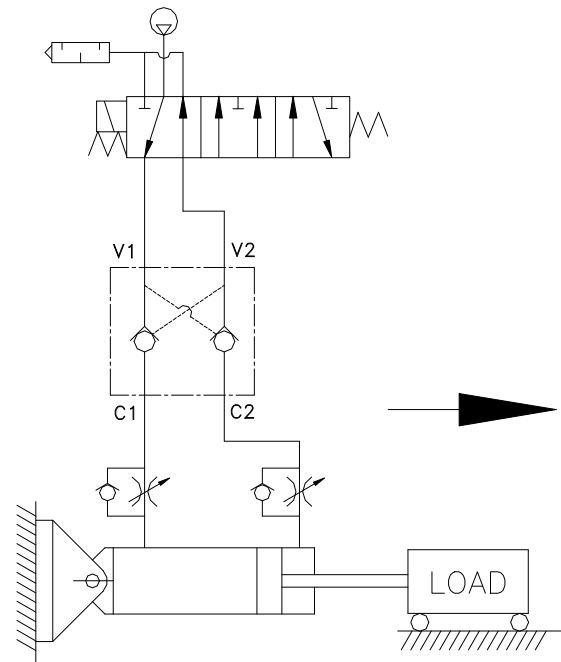
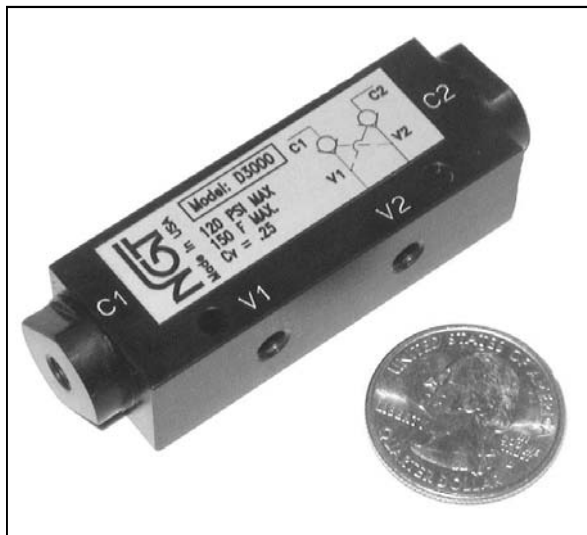
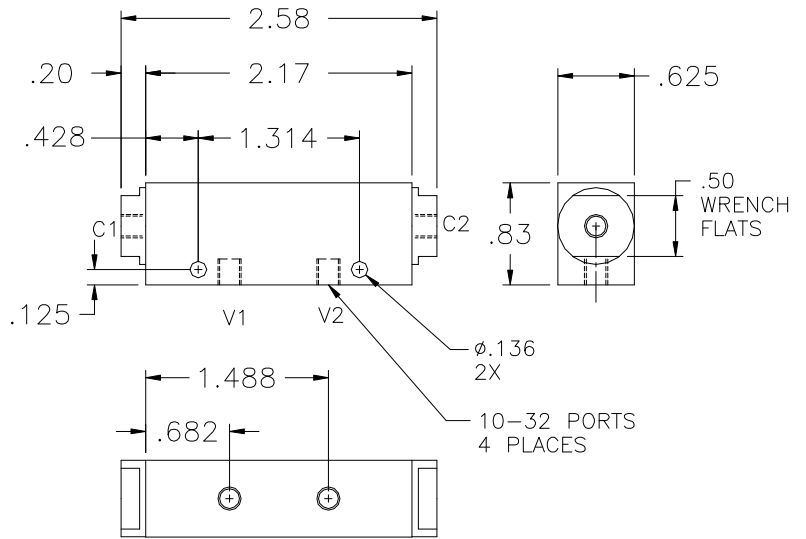
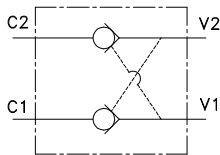


Miniature Dual Check Valve with 10-32 Ports

- Air Tight Locking
- Small Package
- Faster Stops
- Less Bounce

Basic Operation:

In the event of a pressure loss this unique valve maintains cylinder position by locking air in both cylinder ports. Eliminate drift due to leaky spool valves.



Operating Data:

| | |
|----------------------|--|
| Min / Max. Pressure: | 25-120 psi |
| Temp. Range: | 30-150 F |
| Cycle Rate: | 1 cyc./sec. max. |
| Flow Capacity (Cv): | .25 |
| Cracking Pressure: | 1-2 psi |
| Service: | Properly filtered dry air or lubricated air. |

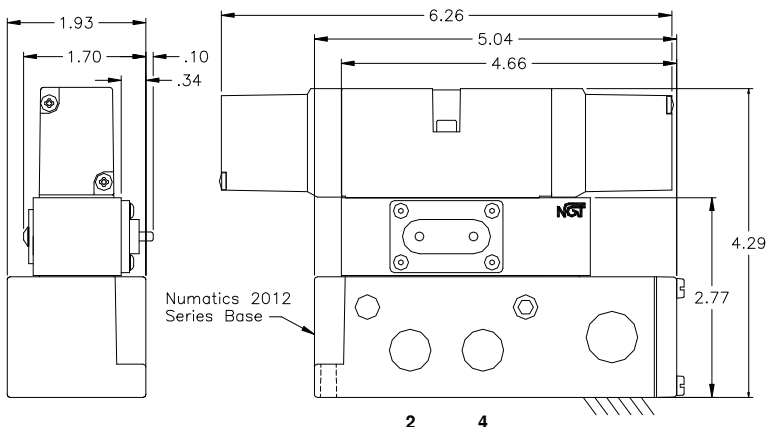
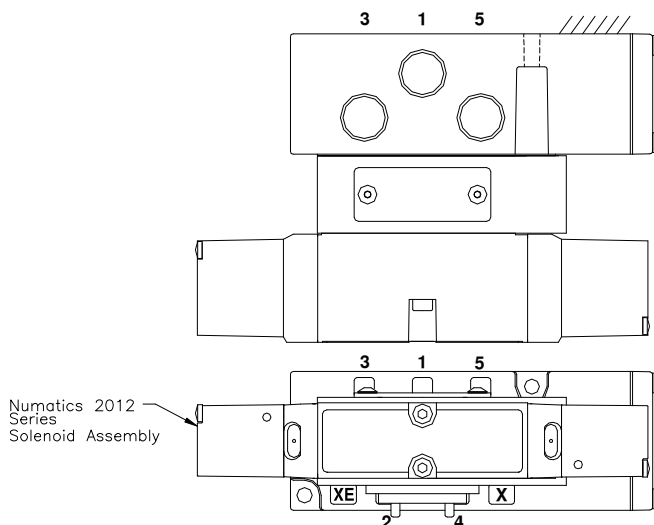
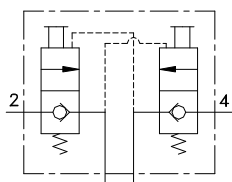
| | |
|------------------|--------------|
| Model No. | D3000 |
|------------------|--------------|

Patents Pending

- **Dual Manual Release**
- **Bubble Tight Locking**
- **Direct Mount to 2012 Base**
- **Locks in 2 Directions**
- **Compact Design**
- **No Extra Plumbing**
- **Quick Assembly (5 min)**

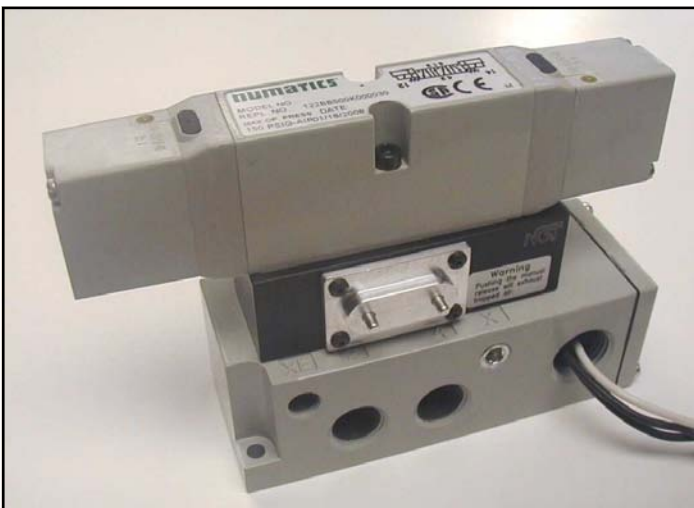
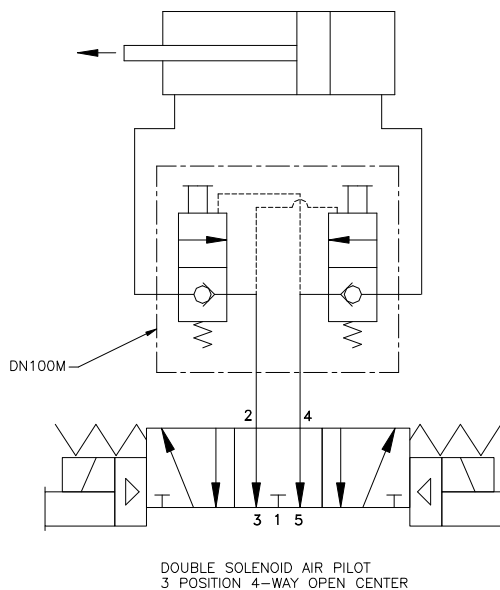
Basic Operation:

In the event of a pressure loss air pressure is locked bubble-tight in both the output ports (2 and 4). Eliminates drift due to leaky spools. The manual release allows the release of trapped air from both ports independently (OSHA requirement).



Operating Data:

- Min. / Max. Pressure:** 30-150 psi
- Temp. Range:** 20-150 F
- Cycle Rate:** 1 cyc./sec. max.
- Flow Capacity (Cv):** 1.2
- Cracking Pressure:** 2-3 psi
- Service:** Properly filtered dry air or lubricated air.
- Solenoid:** 3-position 4-way open center



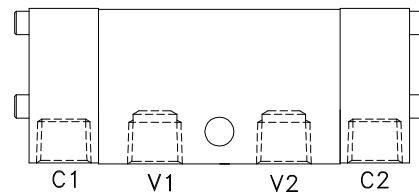
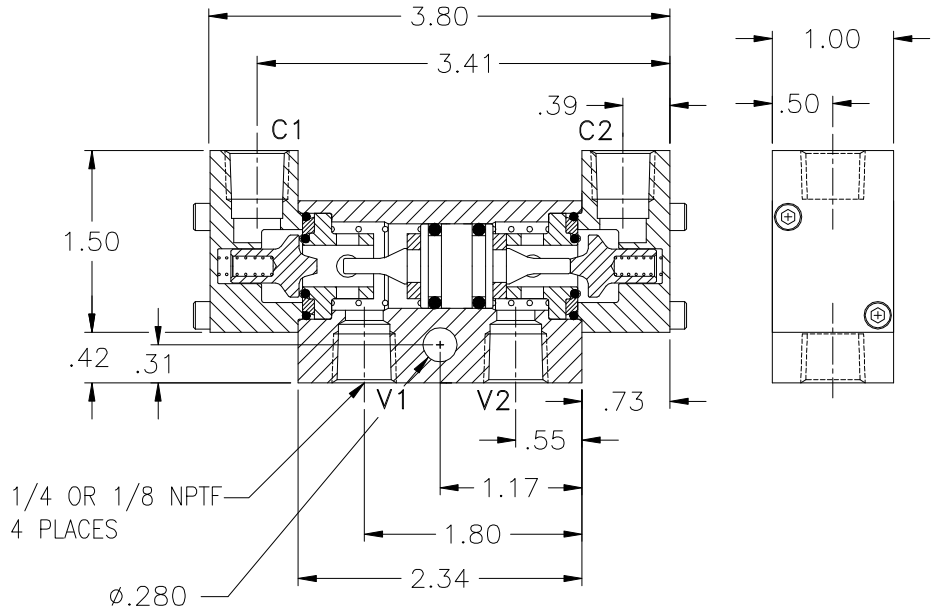
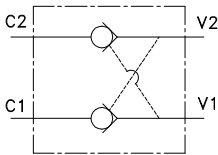
| | |
|------------------|---------------|
| Model No. | DN100M |
|------------------|---------------|



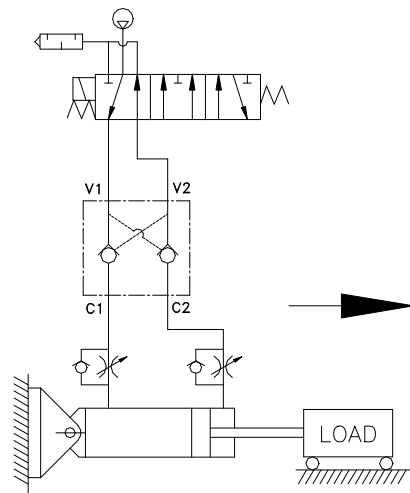
- Air Tight Locking
- Small Package
- Faster Stops
- Less Bounce

Basic Operation:

In the event of a pressure loss this unique valve maintains cylinder position by locking air in both cylinder ports. Eliminate drift due to leaky spool valves.



All ports on one side



Operating Data:

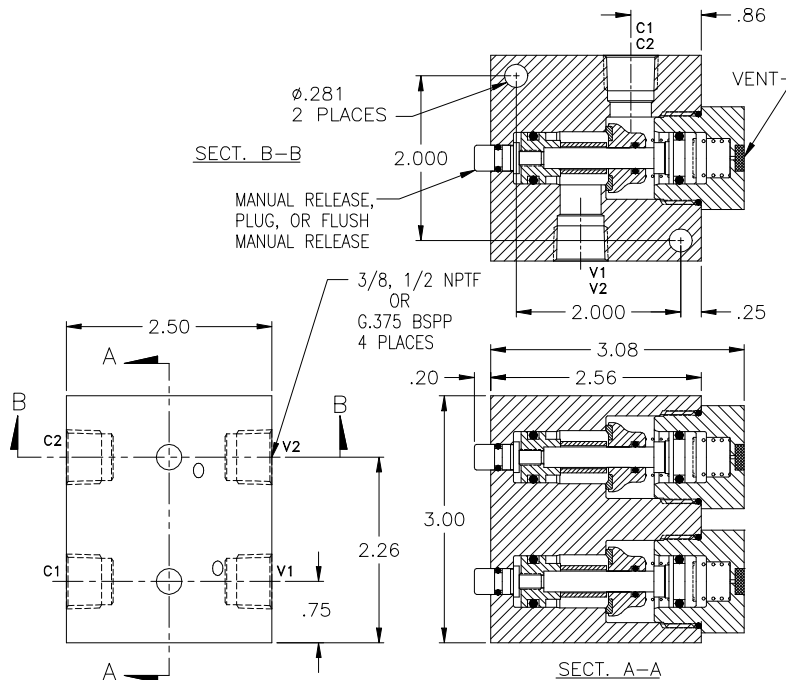
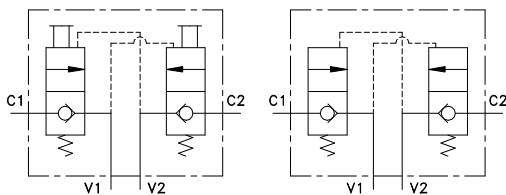
- Min / Max. Pressure: 20-120 psi
- Temp. Range: 30-150 F
- Cycle Rate: 1 cyc./sec. max.
- Flow Capacity (Cv): 1.5
- Cracking Pressure: 1-2 psi
- Service: Properly filtered dry air or lubricated air.

| | |
|----------------------|---------------|
| Model No. | 1/4 NPTF |
| Ports Opposite Sides | D4A000 |
| Ports Same Side | D4AS00 |

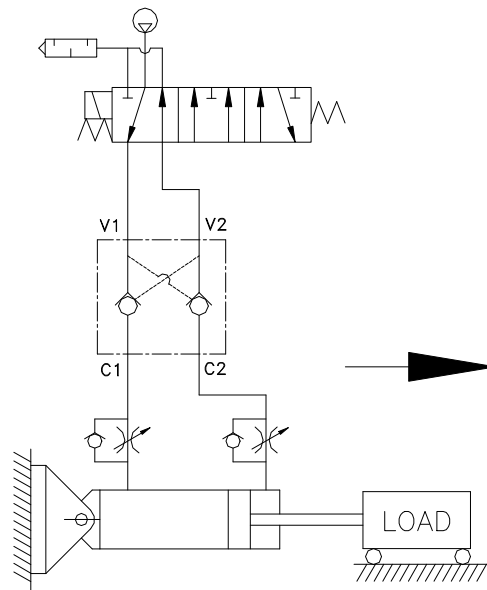
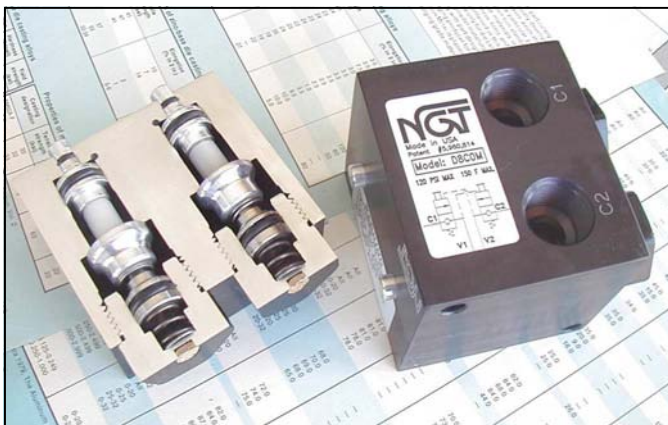
- Dual Manual Release
- .0000522 cc/min Leak Rate
- High Temp Available
- G.375 BSPP In Stock

Basic Operation:

In the event of a pressure loss this unique valve maintains cylinder position by locking air in both cylinder ports. Eliminate drift due to leaky spool valves. A manual release is available to release trapped air from both ports independently.



DIMS. APPLY TO BOTH 3/8 & 1/2 NPTF & BSPP MODELS



Operating Data:

- Max. Pressure:** 150 psi
- Min. Pilot Pressure:** 40 psi
20 psi (see table '-K18')
- Adv & Retract Ratio:** The ratio of advance / retract pressures (or retract / advance) should not be greater than a ratio of 2 to 1.
- Temp. Range:** -20 -150 F
30-350 F (see table)
- Cycle Rate:** 1 cyc./sec. max.
- Flow Capacity (Cv):** 3.8
- Cracking Pressure:** 1-2 psi
- Service:** Properly filtered dry air or lubricated air.

| Model No. | 3/8 NPTF | 3/8 BSPP | 1/2 NPTF |
|----------------------|--------------|---------------|--------------|
| No Manual Release | D6C00 | DG6C00 | D8C00 |
| Manual Release | D6C0M | DG6C0M | D8C0M |
| Flush Manual Release | D6CFM | DG6CFM | D8CFM |

*For high temp seals add (-V) to the model # (ex. D6C0M-V).
For low pilot pressure add (-K18) to the model # (ex. D6C0M-K18)*

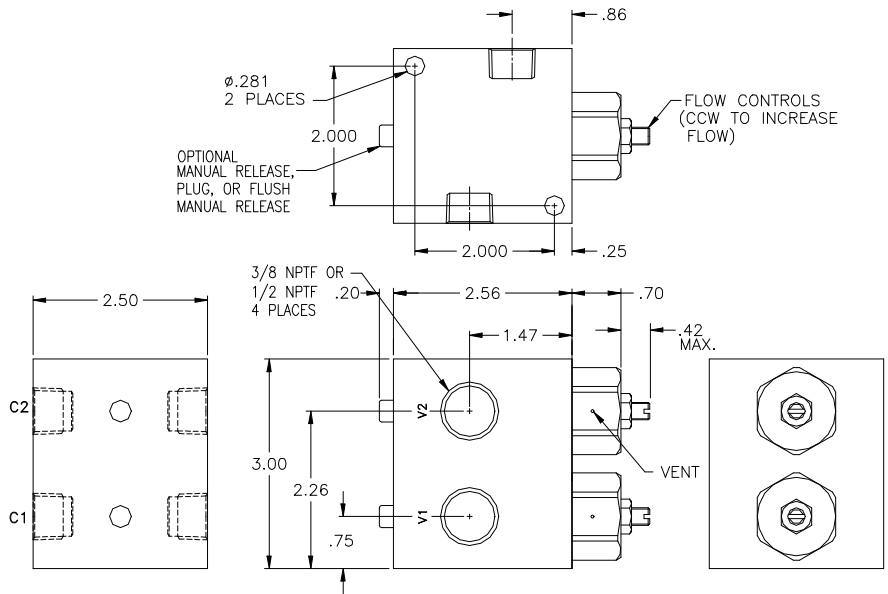


3/8 & 1/2 NPTF & 3/8 BSPP Dual Check Valves with Flow Controls and Optional Manual Release

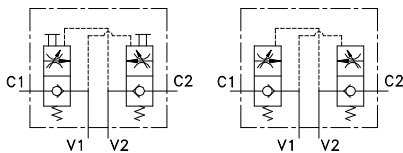
- **Dual Manual Release**
- **.0000522 cc/min Leak Rate**
- **G.375 BSPP In Stock**
- **Lower Loads Slowly**

Basic Operation:

In the event of a pressure loss this unique valve maintains cylinder position by locking air in both cylinder ports. The internal flow controls meter air out of the cylinder. A manual release is available to release trapped air from both ports independently.



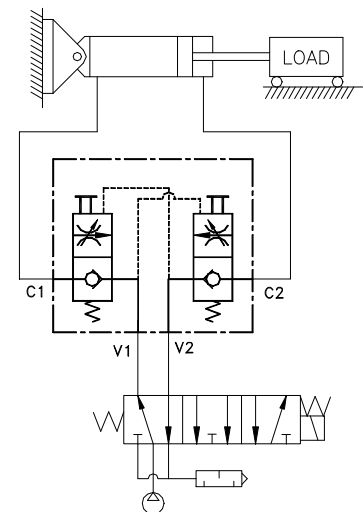
DIMS. APPLY TO BOTH 3/8 & 1/2 NPTF MODELS



Operating Data:

- Max. Pressure:** 150 psi
- Min Pilot Pressure:** 40
25 (see table '-K18')
- Temp. Range:** -20 -150 F
- Adv & Retract Ratio:** The ratio of advance / retract pressures (or retract / advance) should not be greater than a ratio of 2 to 1.
- Cycle Rate:** 1 cyc./sec. max.
- Flow Capacity (Cv):** 3.8 max.
- Cracking Pressure:** 1-2 psi
- Service:** Properly filtered dry air or lubricated air.

| No. of Turns | Equivalent Diameter (in.) |
|--------------|---------------------------|
| .25 | .15 |
| .50 | .21 |
| .75 | .26 |
| 1.0 | .30 |
| 1.25 | .34 |
| 1.50 | .37 |
| 1.75 | .40 |
| 2.00 | .43 |
| 2.25 | .45 |
| 2.50 | .48 |
| 2.75 | .50 |



| Model No. | 3/8 NPTF | 3/8 BSPP | 1/2 NPTF |
|----------------------|----------------|-----------------|----------------|
| No Manual Release | D6C00FL | DG6C00FL | D8C00FL |
| Manual Release | D6C0MFL | DG6C0MFL | D8C0MFL |
| Flush Manual Release | D6CFMFL | DG6CFMFL | D8CFMFL |

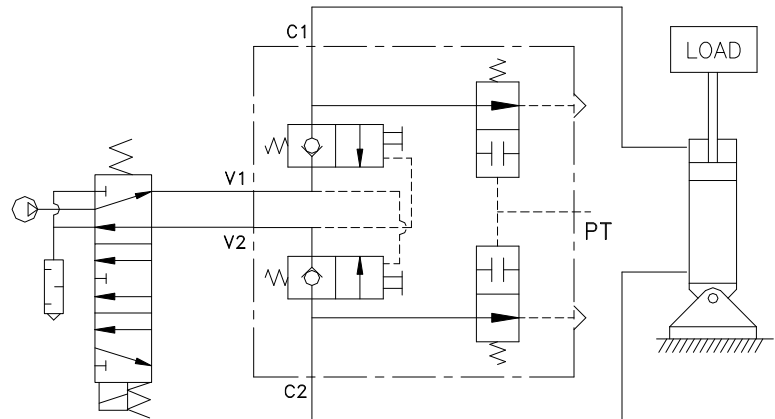
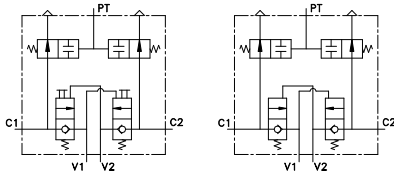
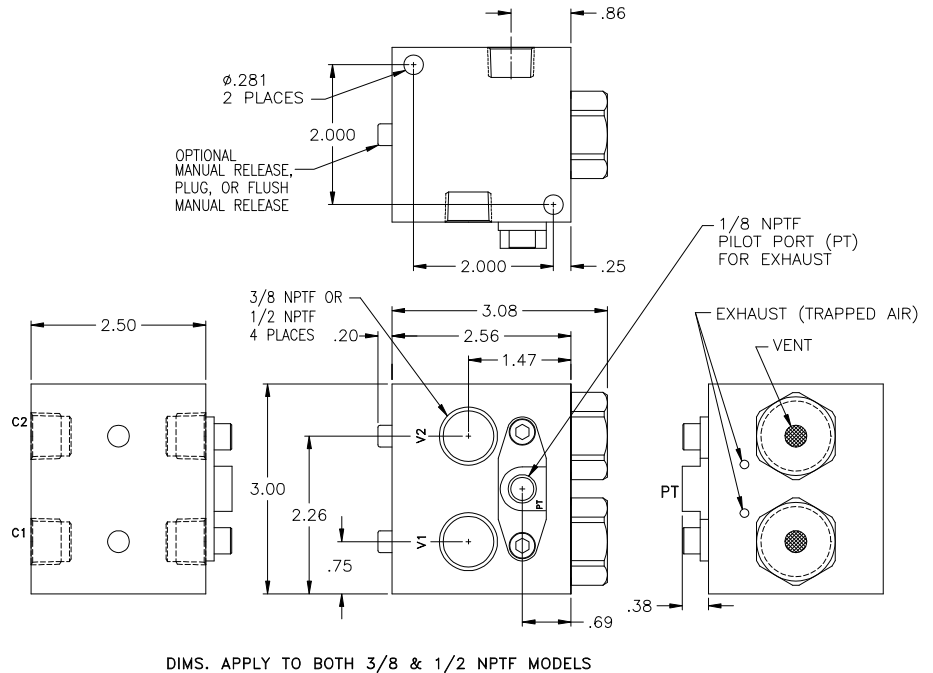
For 25 psi pilot pressure add (-K18) to the model # (ex. D6C0MFL-K18)



- Dual Manual Release
- .0000522 cc/min Leak Rate
- Remote Release

Basic Operation:

This valve was designed for equipment where the valve cannot be easily accessed. In the event of a pressure loss, both output ports will lock bubble tight, as long as pressure is applied to the pilot port 'PT'. Releasing pressure to the pilot port 'PT' will release trapped air to atmosphere. Optional manual release and flow controls are also available with this model.



Operating Data:

- Max. Pressure:** 150 psi
- Min. Pressure:** 40 psi - standard unit
25 psi - low pressure (see table '-K18')
- Adv & Retract Ratio:** The ratio of advance / retract pressure (or retract / advance) should not be greater than a ratio of 2 to 1.
- Temp. Range:** -30 -150 F
- Cycle Rate:** 1 cyc./sec. max.
- Flow Capacity (Cv):** 3.9
- Cracking Pressure:** 1-2 psi
- Auto Exhaust:** At 80 psi trapped air, the pilot port 'PT' must drop to 30 psi to exhaust.
- Service:** Properly filtered dry air or lubricated air.

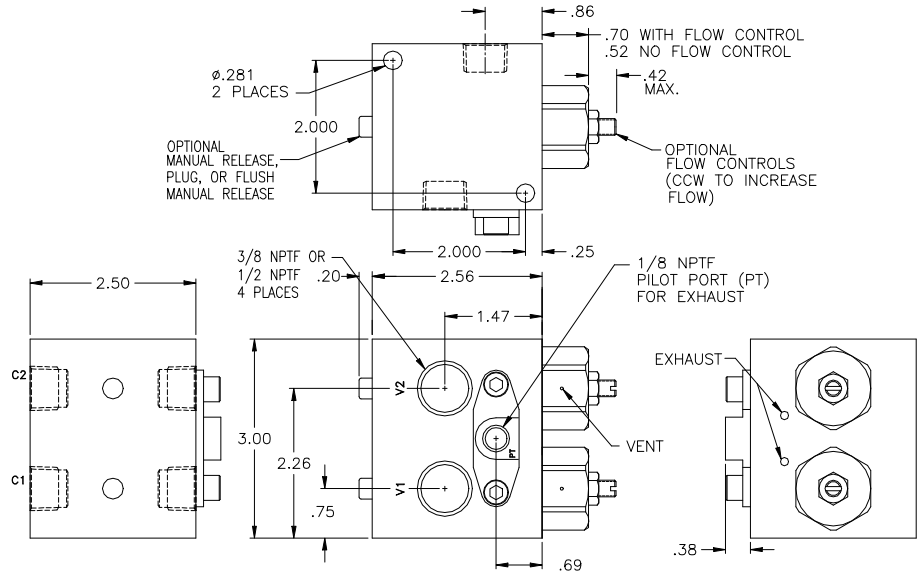
| Model No. | 3/8 NPTF | 1/2 NPTF |
|--|----------------|----------------|
| No Manual Release | D6C00EA | D8C00EA |
| Manual Release | D6C0MEA | D8C0MEA |
| Flush Manual Release | D6CFMEA | D8CFMEA |
| <i>For a lower pilot pressure add (-K18) to the model # (ex. D6C0MEA-K18).</i> | | |

3/8 & 1/2 NPTF Dual Check Valves with Remote Release, Flow Controls and Optional Manual Release

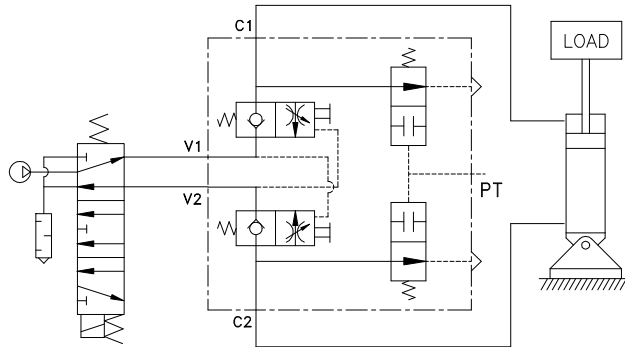
- Dual Manual Release
- .0000522 cc/min Leak Rate
- Remote Release
- Dual Flow Controls

Basic Operation:

This valve was designed for equipment where the valve cannot be easily accessed. In the event of a pressure loss, both output ports will lock bubble tight, as long as pressure is applied to the pilot port 'PT'. Releasing pressure to the pilot port 'PT' will release trapped air to atmosphere. Optional manual release and flow controls are also available with this model.



DIMS. APPLY TO BOTH 3/8 & 1/2 NPTF MODELS



| No. of Turns | Equivalent Diameter (in.) |
|--------------|---------------------------|
| .25 | .15 |
| .50 | .21 |
| .75 | .26 |
| 1.0 | .30 |
| 1.25 | .34 |
| 1.50 | .37 |
| 1.75 | .40 |
| 2.00 | .43 |
| 2.25 | .45 |
| 2.50 | .48 |
| 2.75 | .50 |

Operating Data:

- Max. Pressure: 150 psi
- Min. Pressure: 40 psi - standard unit
25 psi - low pressure (see table '-K18')
- Adv & Retract Ratio: The ratio of advance / retract pressure (or retract / advance) should not be greater than a ratio of 2 to 1.
- Temp. Range: -30 -150 F
- Cycle Rate: 1 cyc./sec. max.
- Flow Capacity (Cv): 3.9 max.
- Cracking Pressure: 1-2 psi
- Auto Exhaust: At 80 psi trapped air, the pilot port 'PT' must drop to 30 psi to exhaust.
- Service: Properly filtered dry air or lubricated air.

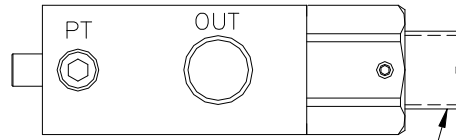
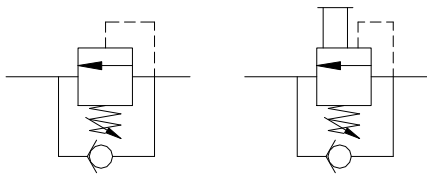
| Model No. | 3/8 NPTF | 1/2 NPTF |
|--|-----------|-----------|
| No Manual Release | D6C00EAFL | D8C00EAFL |
| Manual Release | D6C0MEAFL | D8C0MEAFL |
| Flush Manual Release | D6CFMEAFL | D8CFMEAFL |
| <i>For a lower pilot pressure add (-K18) to the model # (ex. D6C0MEAFL-K18).</i> | | |



- **Optional Manual Release**
- **.0000522 cc/min Leak Rate**
- **Adjustable Load Setting**

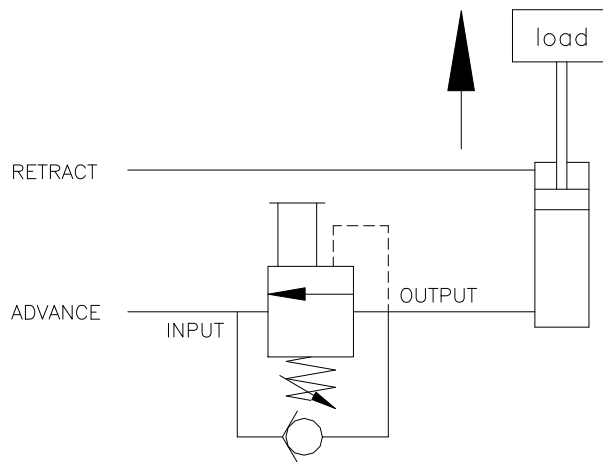
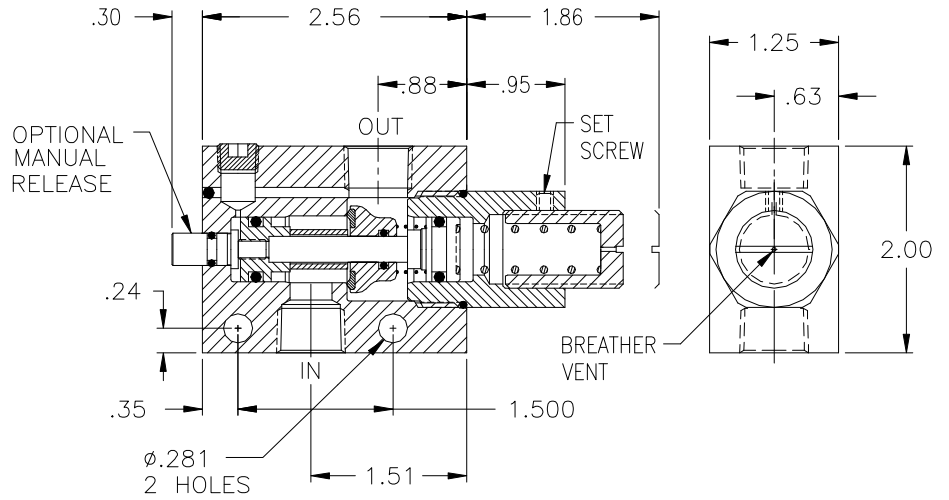
Basic Operation:

The counterbalance valve will hold a load in position until pressure or an external force is applied to move the load. Turning the adjusting screw clockwise will increase the load carrying capacity of the valve. Optional manual and flush manual release.



TURN CW TO INCREASE LOAD HOLDING CAPACITY

| PORT SIZES | |
|------------|-----------|
| INPUT | OUTPUT |
| 1/4 NPTF | 1/4 NPTF |
| 3/8 NPTF | 3/8 NPTF |
| G1/4 BSPP | G1/4 BSPP |
| G3/8 BSPP | G3/8 BSPP |



Operating Data:

- Max. Pressure:** 120 psi
- Leak Rate:** .0000522 cc/min.
- Temp. Range:** 30-150 F
- Cycle Rate:** 1 cyc./sec.
- Flow Capacity (Cv):** 2.6
- Cracking Pressure:** 1-2 psi
- Service:** Properly filtered and lubricated air.

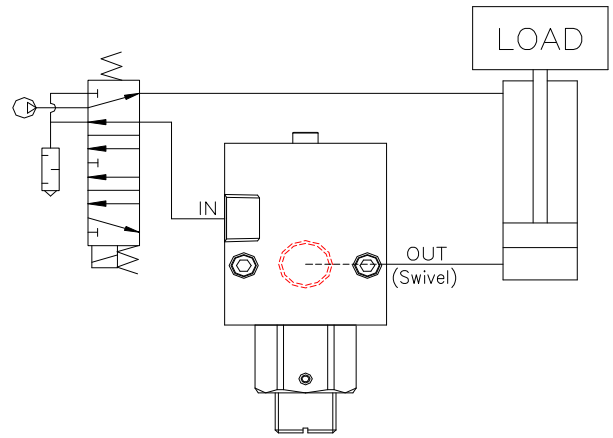
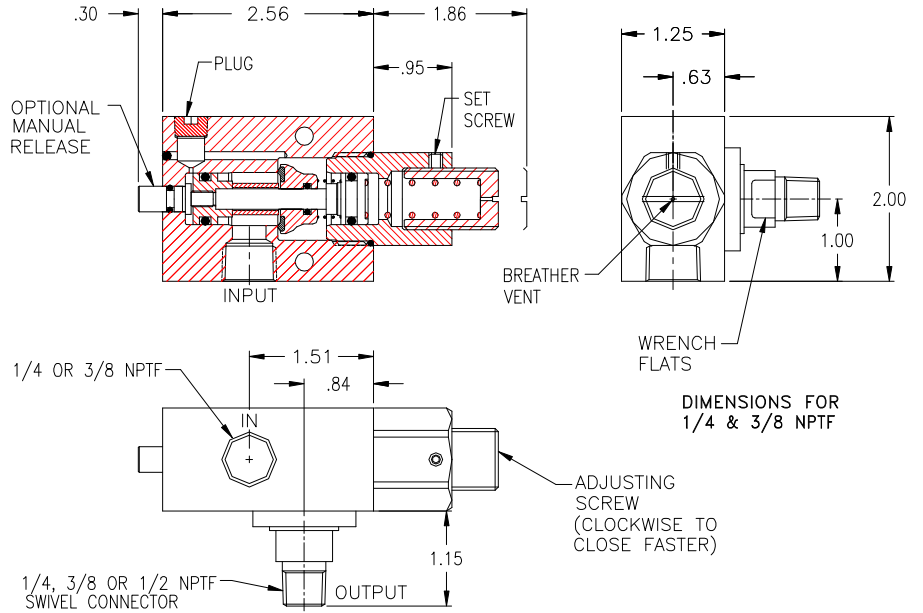
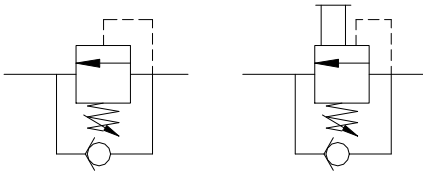
| MODELS: | 1/4 NPTF | 3/8 NPTF | 1/4 BSPP | 3/8 BSPP |
|-------------------|---------------|---------------|----------------|----------------|
| No Manual Release | B4MC00 | B6MC00 | BG4MC00 | BG6MC00 |
| Manual Release | B4MC0M | B6MC0M | BG4MC0M | BG6MC0M |
| Flush Release | B4MCFM | B6MCFM | BG4MCFM | BG6MCFM |



- **Optional Manual Release**
- **.0000522 cc/min Leak Rate**
- **Adjustable Load Setting**
- **Direct Mounting Swivel**

Basic Operation:

The counterbalance valve will hold a load in position until pressure or an external force is applied to move the load. Turning the adjusting screw clockwise will increase the load carrying capacity of the valve. Optional manual and flush manual release.



Operating Data:

Max. Pressure: 120 psi
Leak Rate: .0000522 cc/min.
Temp. Range: 30-150 F
Cycle Rate: 1 cyc./sec.
Flow Capacity (Cv): 2.6
Cracking Pressure: 1-2 psi
Service: Properly filtered and lubricated air.

| MODELS | | | |
|---------------------|------------------|------------------|------------------|
| 1/4 NPTF Input Port | | | |
| | 1/4 Swivel | 3/8 Swivel | 1/2 Swivel |
| No Manual Release | B4SC00-25 | B4SC00-38 | B4SC00-50 |
| Manual Release | B4SC0M-25 | B4SC0M-38 | B4SC0M-50 |
| Flush Release | B4SCFM-25 | B4SCFM-38 | B4SCFM-50 |

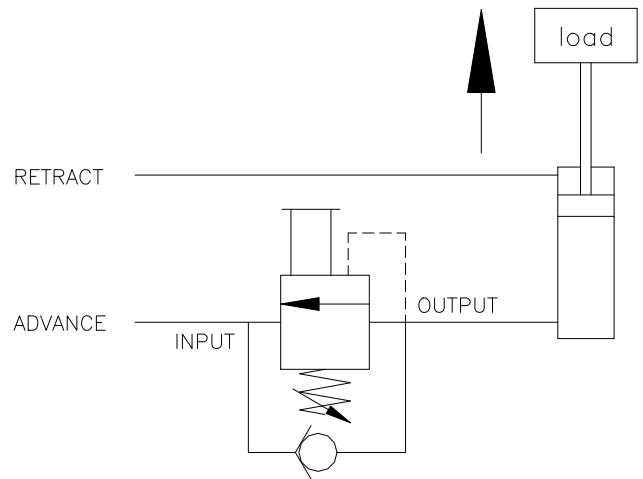
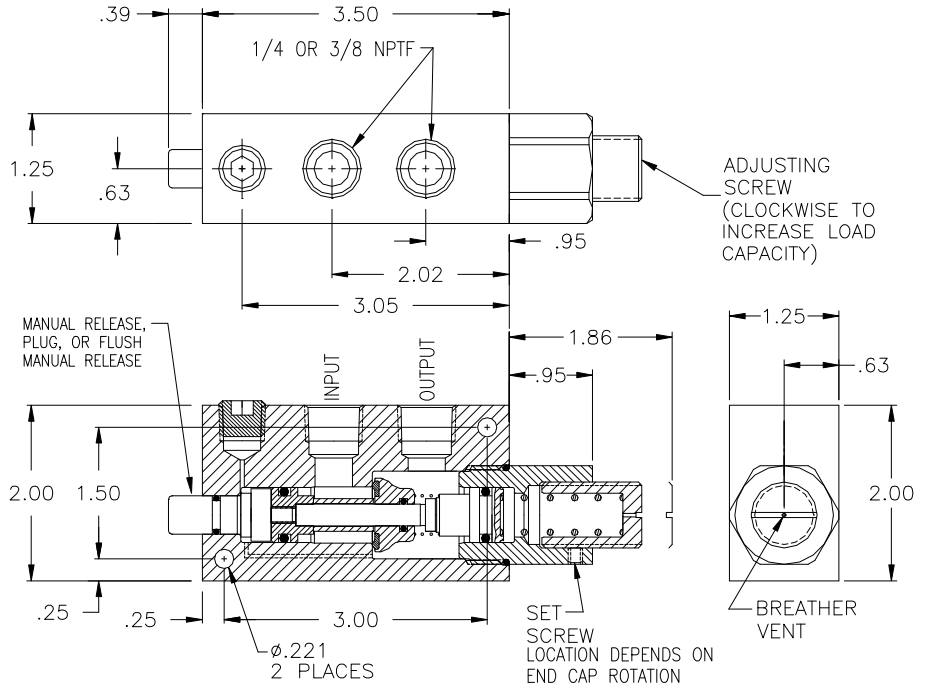
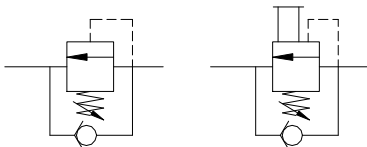
| 3/8 NPTF Input Port | | | |
|---------------------|------------------|------------------|------------------|
| | 1/4 Swivel | 3/8 Swivel | 1/2 Swivel |
| No Manual Release | B6SC00-25 | B6SC00-38 | B6SC00-50 |
| Manual Release | B6SC0M-25 | B6SC0M-38 | B6SC0M-50 |
| Flush Release | B6SCFM-25 | B6SCFM-38 | B6SCFM-50 |



- **Optional Manual Release**
- **.0000522 cc/min Leak Rate**
- **Adjustable Load Setting**

Basic Operation:

The counterbalance valve will hold a load in position until pressure or an external force is applied to move the load. Turning the adjusting screw clockwise will increase the load carrying capacity of the valve. Optional manual and flush manual release.



Operating Data:

Max. Pressure: 120 psi
Leak Rate: .0000522 cc/min.
Temp. Range: 30-150 F
Cycle Rate: 1 cyc./sec.
Flow Capacity (Cv): 2.6
Cracking Pressure: 1-2 psi
Service: Properly filtered and lubricated air.

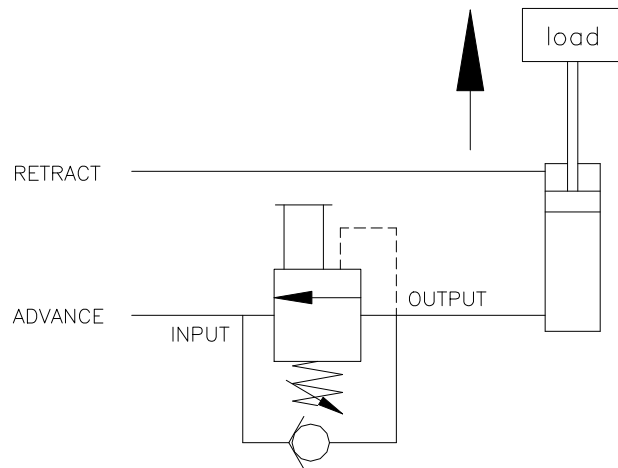
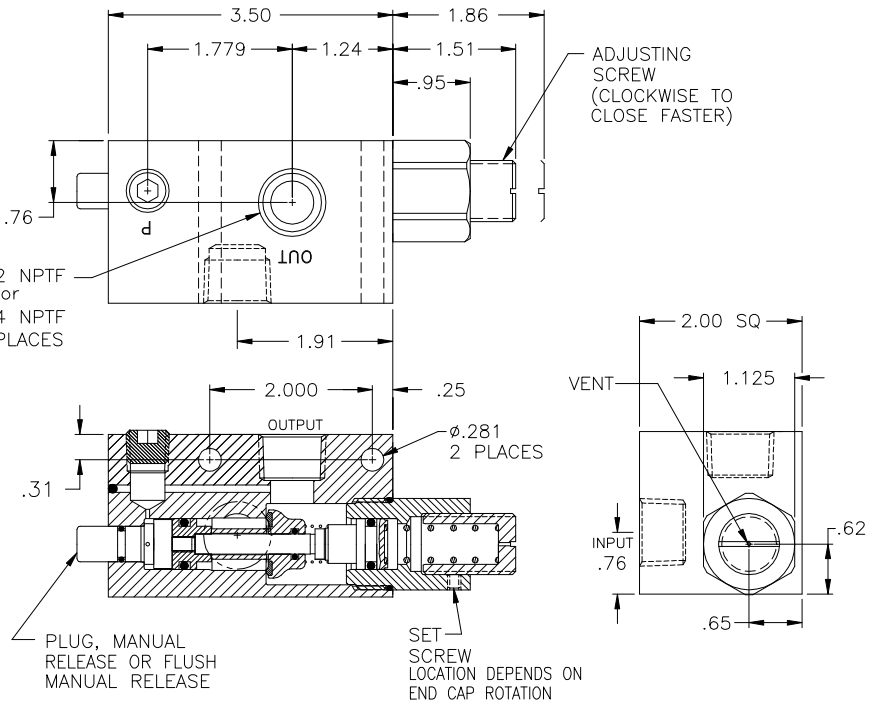
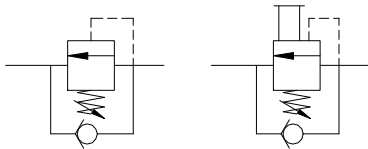
| MODELS: | 1/4 NPTF | 3/8 NPTF |
|-------------------|---------------|---------------|
| No Manual Release | B41C00 | B61C00 |
| Manual Release | B41C0M | B61C0M |
| Flush Release | B41CFM | B61CFM |



- **Optional Manual Release**
- **.0000522 cc/min Leak Rate**
- **Adjustable Load Setting**

Basic Operation:

The counterbalance valve will hold a load in position until pressure or an external force is applied to move the load. Turning the adjusting screw clockwise will increase the load carrying capacity of the valve. Optional manual and flush manual release.



Operating Data:

Max. Pressure: 120 psi
Leak Rate: .0000522 cc/min.
Temp. Range: 30-150 F
Cycle Rate: 1 cyc./sec.
Flow Capacity (Cv): 3.8
Cracking Pressure: 1-2 psi
Service: Properly filtered and lubricated air.

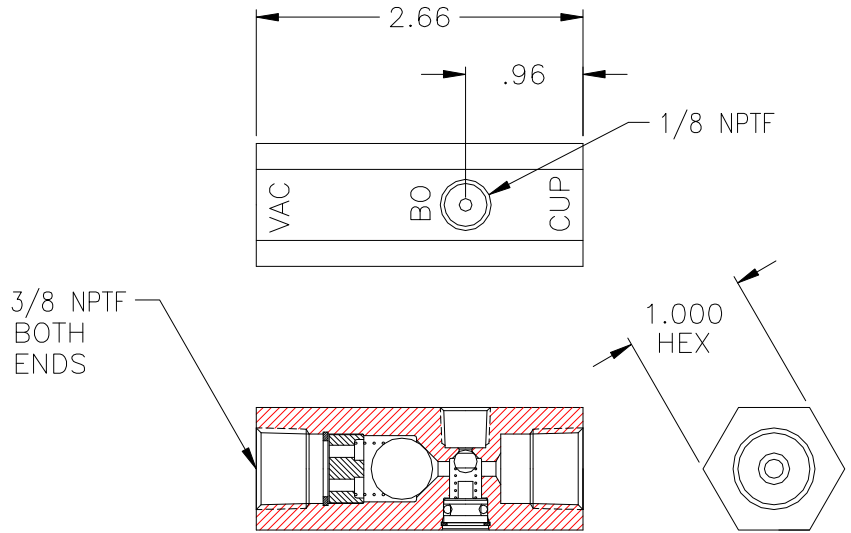
| MODELS: | 1/2 NPTF | 3/4 NPTF |
|-------------------|---------------|----------------|
| No Manual Release | B81C00 | B121C00 |
| Manual Release | B81C0M | B121C0M |
| Flush Release | B81CFM | B121CFM |



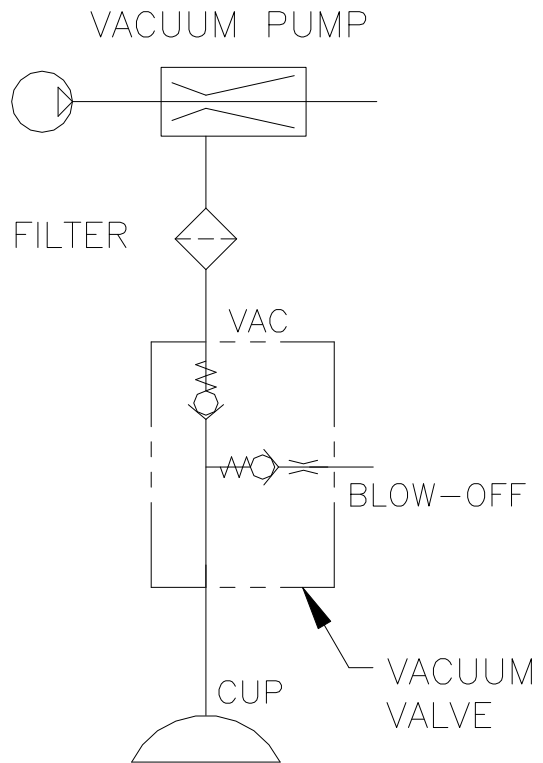
- Air-Tight
- Small Package

Basic Operation:

Vacuum is applied to the vacuum port in order to pick up a part. Pressure is applied to eject the part from the vacuum cup. The internal check maintains vacuum when the supply is removed.



THIS MODEL REPLACES THE V6000



Operating Data:

- Min Blow Off: 25 psi
- Temp. Range: 30-150 F
- Vacuum Cracking: 1 in Hg.
- Flow Capacity (Cv): .6
- Service: Properly filtered dry air or lubricated air.

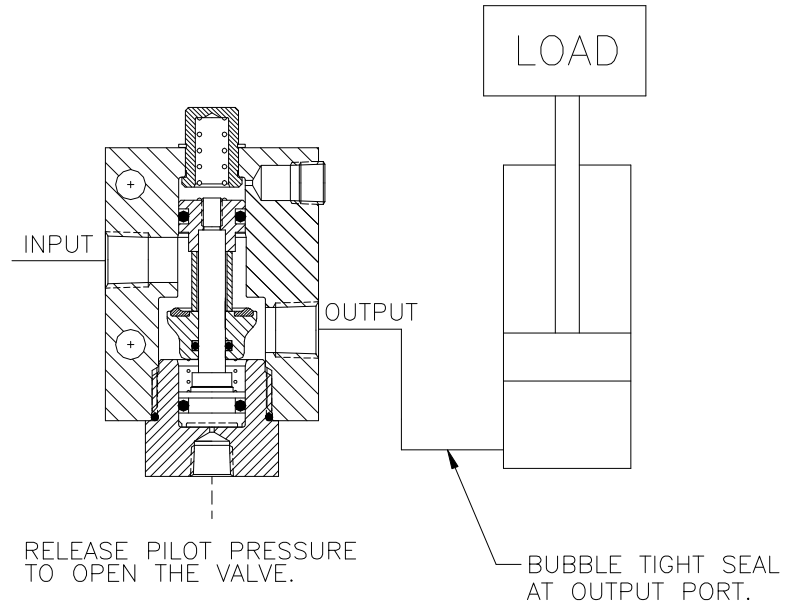
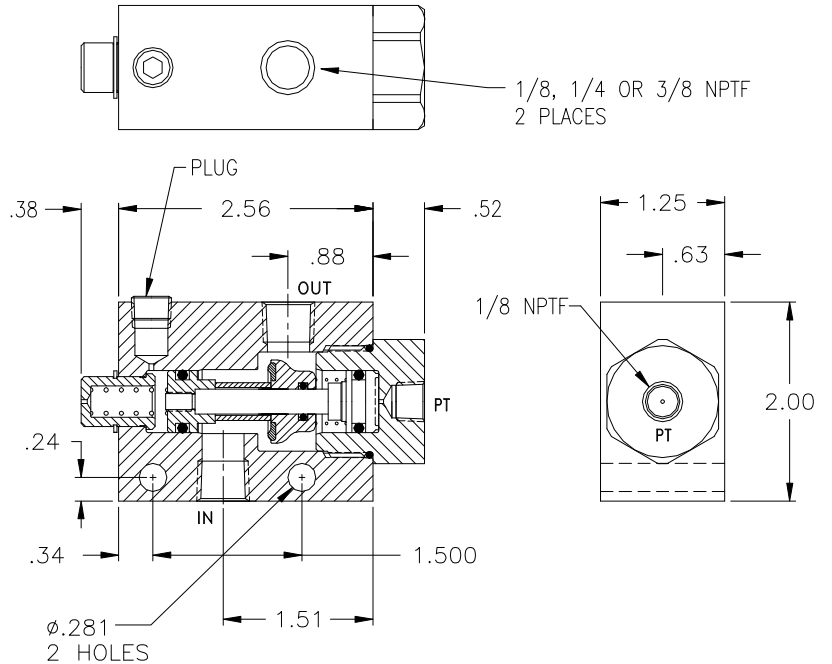
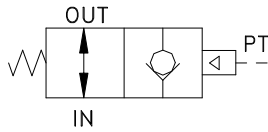
| |
|------------------|
| Model No. |
| V6400 |

1/8, 1/4 & 3/8 NPTF 2-Way Normally Open, Pilot to Close with Floating Check

- .000052 cc/min Leak Rate
- Pilot to Close
- Checks in One Direction

Basic Operation:

Normally open valve that closes when pressure is applied to the pilot port. To open the valve, release the pilot pressure. Internal check allows free flow from input to output.



Operating Data:

- Max. Pressure:** 120 psi
- Pilot to Close:** 45 psi min.
- Leak Rate:** .0000522 cubic cm/min
- Temp. Range:** -20 F to 150 F
- Cycle Rate:** 1 cyc./sec. max.
- Flow Capacity (Cv):** 1.7 (1/8 model)
2.6 (1/4 and 3/8 models)
- Cracking Pressure:** 1-2 psi
- Service:** Properly filtered dry air or lubricated air.

| Model No. | | |
|----------------|----------------|----------------|
| 1/8 NPTF | 1/4 NPTF | 3/8 NPTF |
| B2M00N0 | B4M00N0 | B6M00N0 |

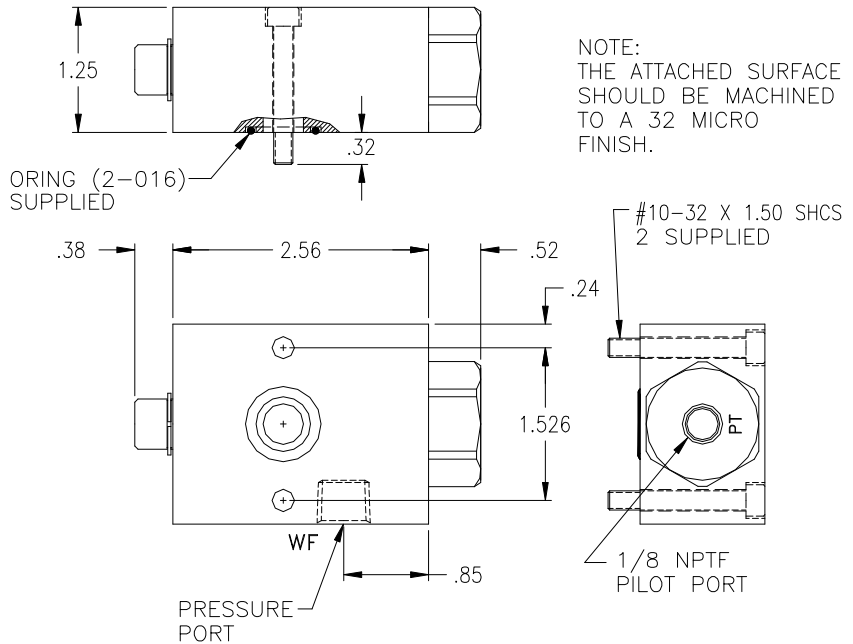
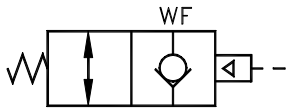


1/4 NPTF Direct Mount Normally Open Valve

- Direct Mount
- .000522 cc/min Leak Rate
- High Flow
- Air Pilot to Close
- Checks in One Direction

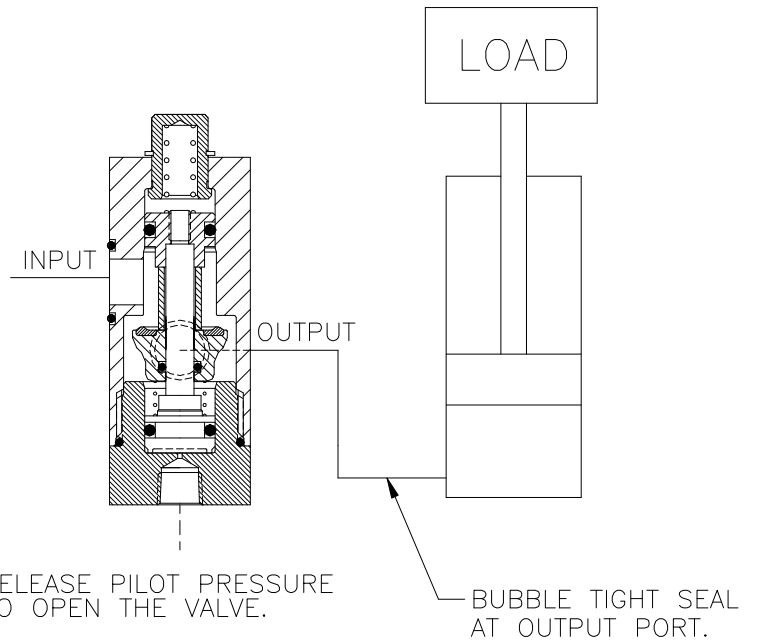
Basic Operation:

Normally open valve can be mounted directly to a manifold, air cylinder or any pneumatic device with a flat surface. Use where air tight operation is required. Pilot to close the valve. Internal check allows free flow in one direction.



NOTE:
THE ATTACHED SURFACE
SHOULD BE MACHINED
TO A .32 MICRO
FINISH.

VALVE COMES WITH
MOUNTING KIT.



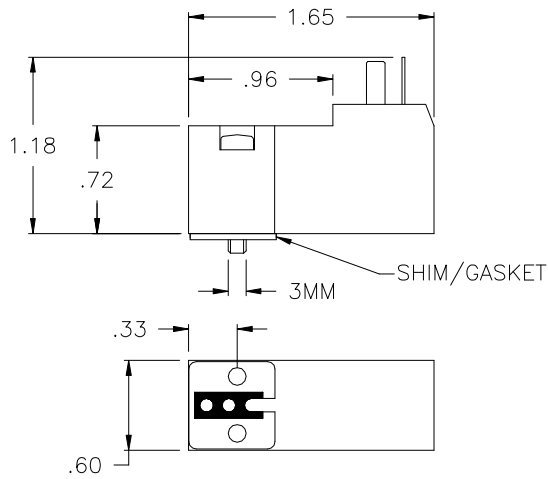
Operating Data:

| | |
|-----------------------------|---|
| Max. Pressure: | 120 psi |
| Min. Pilot Pressure: | 45 psi |
| Leak Rate: | .0000522 cc/min. |
| Temp. Range: | 30-150 F |
| Cycle Rate: | 1 cyc./sec. max. |
| Flow Capacity (Cv): | 2.6 |
| Cracking Pressure: | 1-2 psi |
| Service: | Properly filtered dry air or lubricated air. |

| |
|------------------|
| Model No. |
| B4MDONOGM |

Coils, Connectors & Repair Kits

Coil for 1/8, 1/4, 3/8 and 1/4 Tube Model Valves

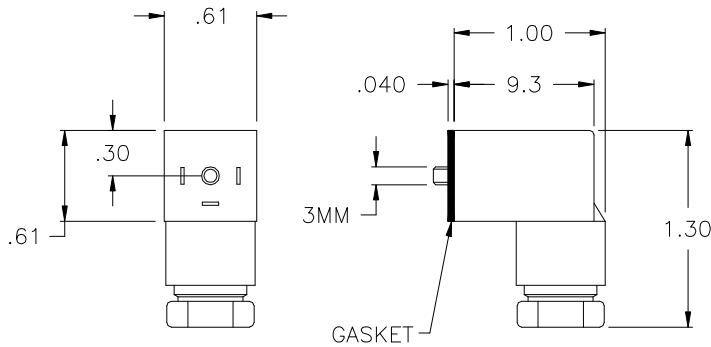


Description:

Temp range: 14-122 F
 NEMA 4 / IP 65 (EN 60529)
 Continuous Duty
 Normally Closed
 Filtered lubricated or dry air operation
 9.4 mm Pin Spacing

| Model No. | Watt | Max Pressure | Voltage |
|-----------|------|--------------|---------|
| A4M13 | 2.5 | 145 psi | 24 VDC |

Connector for 9.4 mm Pin Spacing



Description:

9.4 mm pin spacing
 Will accept .16 to .26 diameter cable

| Model No. | Description |
|-----------|------------------------------|
| A4M16 | Standard black |
| A4M17 | 24 vdc, transparent with LED |

Replacement Kits for A, B & D Series Valves

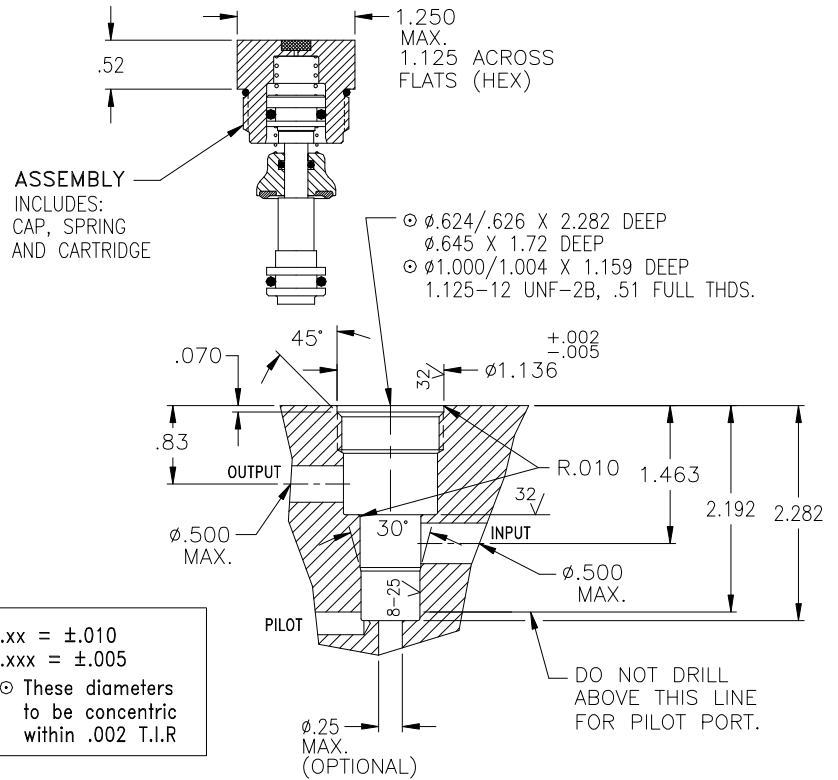
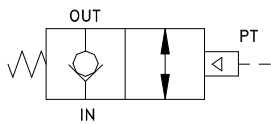
| Model No. | | | |
|------------------------------------|----------|-----------|----------|
| First 3 Characters of Model Number | Standard | High Temp | Low Temp |
| A2M, A4M, A6M, A4TM | BC100 | - | - |
| B2M, B4M, B6M, BG6 | BC400 | BC400V | BC400T40 |
| B41, B61, B81, B12 | BC510 | BC510V | |
| D6C, D8C - (2 Required) | BC400 | BC400V | BC400T40 |

Pneumatic Cartridge Valve for a Manifold

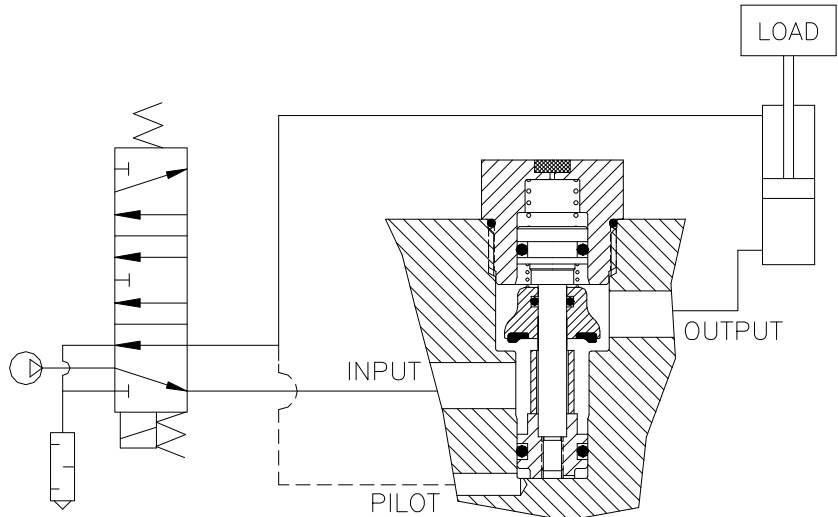
- High Flow
- High & Low Temp
- .000113 cc/min Leak Rate
- Insert From One Side
- Easy Repair

Basic Operation:

Lock your pneumatic device in position when a pressure drop or total loss of pressure occurs.



.xx = ± 0.010
 .xxx = ± 0.005
 These diameters to be concentric within .002 T.I.R.



Operating Data:

- Max. Pressure: 150 psi
 Min. Pilot Pressure: 40 psi
 25 psi (see table)
 Leak Rate: .000113 cc/min
 Temp. Range: -20 to 150 F (Nitrile)
 30 to 350 F (FKM)
 -40 to 150 F (EPDM)
 Cycle Rate: 1 cyc./sec. max.
 Max. Flow Capacity (Cv): 2.6
 Cracking Pressure: 1-3 psi
 Service: Properly filtered dry air or lubricated air.

| Description | Standard | Low Temp* | High Temp |
|-----------------------------|----------|-----------|-----------|
| Cartridge, End Cap & Spring | BC4MNAS | BC4MNAS40 | BC4MNASV |
| Cartridge & Spring | BC4MN | BC4MNT40 | BC4MNV |

* No petroleum based lubricants. Comes lubricated with a silicone based lubricant. Add (-K18) to the model number for a lower pilot pressure (Ex: BC4MNAS-K18).