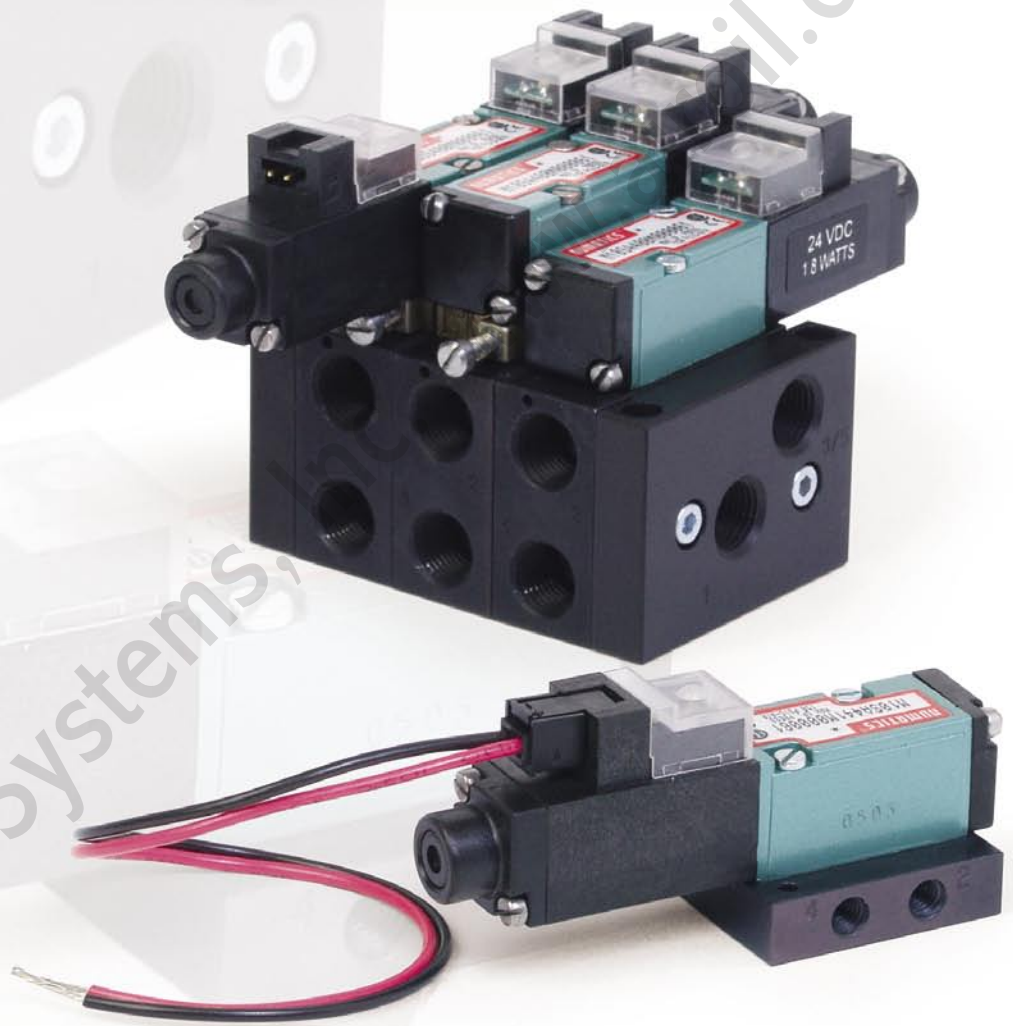


valves

# Micro-Air Series

*Direct Solenoid Actuated Valves*



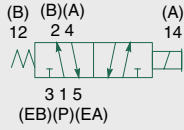
# numatics®

<b>MicroAir Series</b> .....	3-9
Technical and Operating Data .....	3
How to Order .....	4
Valve on Individual Base .....	5
Manifold Assemblies .....	6
End Plate Kits .....	7
Blank Station Plate Kit .....	7
Blocking Disc Kit .....	7
Base Assemblies .....	7
Flexiblok Manifold Kits .....	7
Speed Control Kit .....	7
Solenoid Capsule Assemblies .....	7
Plug Connector .....	7
Service Kits and Parts .....	8-9

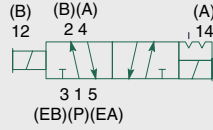
Air-Oil Systems, Inc. [www.airoil.com](http://www.airoil.com)



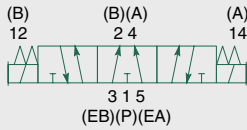
### single solenoid 2 position 4-way



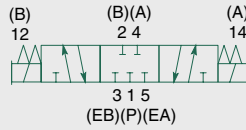
### double solenoid 2 position 4-way



### double solenoid 3 position 4-way open center



### double solenoid 3 position 4-way closed center



5 Ported, 2 and 3 position, 4-way, Spool & Sleeve  
Cv: 0.13

- Direct solenoid actuated
- Plug-in solenoid with plug-in connector and LED
- Unlubricated or lubricated service
- Integral speed control available
- Multi-purpose



## Technical Data

VALVE DATA	ENGLISH		METRIC	
Cv	1/8 = 0.13	10-32 = 0.13	1/8 = 0.13	M5 = 0.13
Flow capacity	6 SCFM Upstream pressure to atmosphere @ 80 PSIG	6 SCFM Upstream pressure to atmosphere @ 80 PSIG	128NI/m 6 bar upstream/5 bar downstream	128NI/m 6 bar upstream/5 bar downstream
Operating Pressure Range	28" HG. Vacuum to 150 PSIG		Vacuum to 10 Bar	
Temperature Range (ambient)	-10°F to +115°F		-23°C to +46°C	

## Operating Data

ALL SOLENOIDS ARE CONTINUOUS DUTY RATED	12 VDC		24 VDC	
Power (Watts)	1.8		1.8	
Holding Current (Amps)	0.16		0.083	
2-Position, Single, Spring Return	0.014	0.018	0.014	0.018
2-Position, Double, Detented	0.014	N/A	0.014	N/A
3-Position, Spring Centered	0.014	0.018	0.014	0.018



## MicroAir Series

### How to Order

#### Valves

**M10 SA 4 46 M 0 000 61**

#### Valve Series & Port Size

M10\* = 10-32  
 M11 = 1/8  
 \*Valve unit only.

#### Valve Type

SA = Single Direct Solenoid, Spring Return w/Flush Non-Locking Manual Override  
 SS = Double Direct Solenoid w/Flush Non-Locking Manual Override  
 00 = Manifold Block w/o Valve

#### Function

4 = 2 Position 4-Way (5/2)  
 5 = 3 Position 4-Way (5/3), Open Center, Dual Pressure  
 6 = 3 Position 4-Way (5/3), Blocked Center  
 0 = Manifold Block w/o Valve  
 P = Manifold Block w/ Blank Station Plate

#### Mounting

00 = Valve Unit, w/o Mounting  
 01 = Valve Unit, Speed Control, w/o Mounting  
 11 = Manifold Block, Side Cylinder Ports  
 21 = Manifold Block, Side Cylinder Ports, Speed Control  
 41 = Base, Individual Exhaust, Side Cylinder Ports  
 46 = Base, Individual Exhaust, Side Cylinder Ports, Speed Control

#### Voltage

60 = 12 VDC  
 61 = 24 VDC

#### Options

000 = No options

#### Port Type

0 = NPTF or UNF Pressure Ports or Valve Unit w/o Mounting  
 G = ISO228/1-G Pressure Ports  
 M = M5

#### Wiring Option

M = Plug-In, w/ Light, VDC

#### Manifold Assembly

**AK 0 5 E 0000 1 N STD**

#### Electrical/Electronics Type & Location

0 = Standard

#### Valve Line

5 = MicroAir Series

#### Number of Valve Stations

A = 1	E = 5	I = 9
B = 2	F = 6	J = 10
C = 3	G = 7	K = 11
D = 4	H = 8	L = 12

#### Options

STD = Standard

#### Port Type

N = NPTF Pressure Ports  
 G = ISO228/1-G Pressure Ports

#### End Plate Port Type

0 = 1/8 for #10-32 UNF or M5 Manifold Blocks  
 1 = 1/8 for 1/8 Manifold Blocks

Note: All Manifold Blocks in a Manifold Assembly must have the same port size.

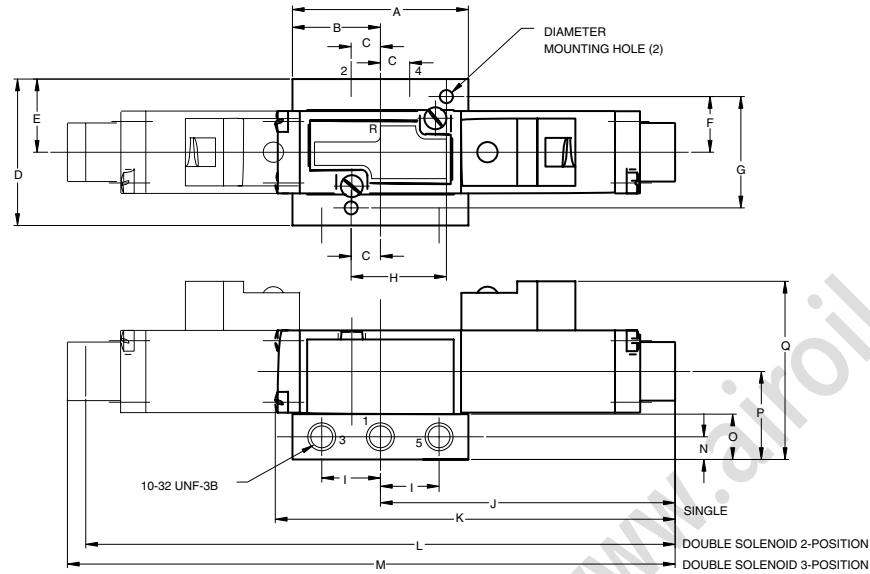
#### Example Order:

List in order left to right facing cylinder ports

	AK05B00000NSTD
Station 1	M10SA411M000061
Station 2	M10SS411M000061
Blocking Plug:	239-466 (install in P gallery) ASSEMBLED



### Valve on Individual Base, 10-32 UNF-3B

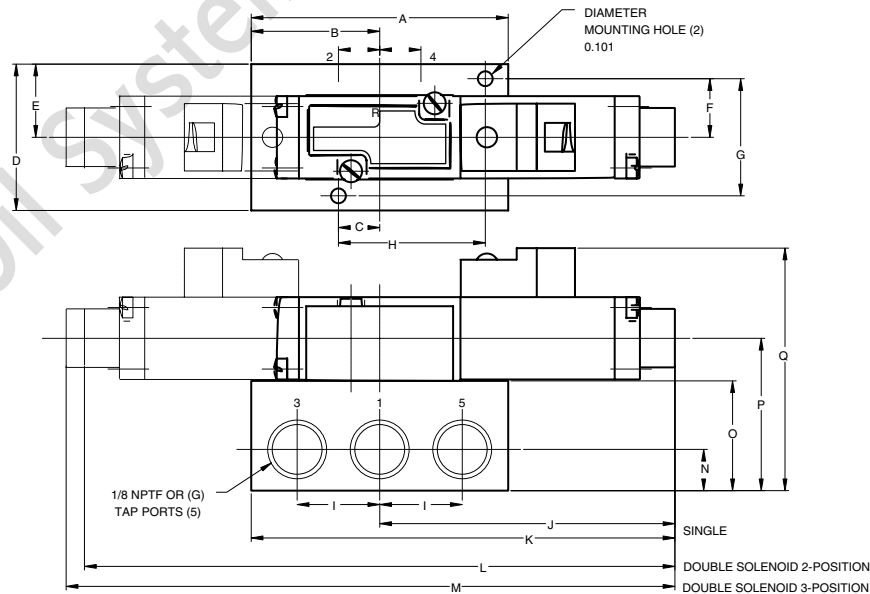


#### Dimensions

top dimensions = inches and bottom dimensions (in parenthesis) = millimeters

A	B	C	D	E	F	G	H	I	J	K	L	M	N	O	P	Q
1.20	0.60	0.20	1.00	0.50	0.38	0.76	0.65	0.40	2.01	2.73	4.02	4.15	0.16	0.31	0.60	1.22
(30.5)	(15.2)	(5.1)	(25.4)	(12.7)	(9.7)	(19.3)	(16.5)	(10.2)	(51.1)	(69.3)	(102.1)	(105.4)	(4.1)	(7.9)	(15.2)	(31.0)

### Valve on Individual Base, 1/8 NPTF



#### Dimensions

top dimensions = inches and bottom dimensions (in parenthesis) = millimeters

A	B	C	D	E	F	G	H	I	J	K	L	M	N	O	P	Q
1.75	0.88	0.28	1.00	0.50	0.40	0.80	1.00	0.56	2.01	2.88	4.02	4.15	0.28	0.75	1.04	1.66
(44.5)	(22.4)	(7.1)	(25.4)	(12.7)	(10.2)	(20.3)	(25.4)	(14.2)	(51.1)	(73.2)	(102.1)	(105.4)	(7.1)	(19.1)	(26.4)	(42.2)











